

Pioneer

X-SMC55DAB-s

Slim Micro System



Discover the benefits of registering your product online at
<http://www.pioneer.co.uk> (or <http://www.pioneer.eu>).

Operating Instructions



Made for



iPod



iPhone



iPad

CAUTION

TO PREVENT THE RISK OF ELECTRIC SHOCK, DO NOT REMOVE COVER (OR BACK). NO USER-SERVICEABLE PARTS INSIDE. REFER SERVICING TO QUALIFIED SERVICE PERSONNEL.

D3-4-2-1-B1_En

WARNING

This equipment is not waterproof. To prevent a fire or shock hazard, do not place any container filled with liquid near this equipment (such as a vase or flower pot) or expose it to dripping, splashing, rain or moisture.

D3-4-2-1-3_A1_En

WARNING

To prevent a fire hazard, do not place any naked flame sources (such as a lighted candle) on the equipment.

D3-4-2-1-7a_A1_En

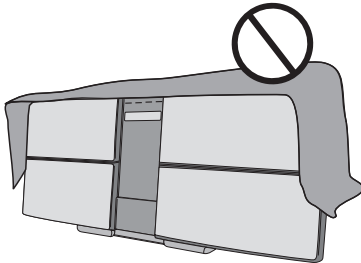
VENTILATION CAUTION

When installing this unit, make sure to leave space around the unit for ventilation to improve heat radiation (at least 20 cm at top, 10 cm at rear, and 10 cm at each side).

WARNING

Slots and openings in the cabinet are provided for ventilation to ensure reliable operation of the product, and to protect it from overheating. To prevent fire hazard, the openings should never be blocked or covered with items (such as newspapers, table-cloths, curtains) or by operating the equipment on thick carpet or a bed.

D3-4-2-1-7b*_A1_En



Operating Environment

Operating environment temperature and humidity: +5 °C to +35 °C (+41 °F to +95 °F); less than 85 %RH (cooling vents not blocked)

Do not install this unit in a poorly ventilated area, or in locations exposed to high humidity or direct sunlight (or strong artificial light).

D3-4-2-1-7c*_A2_En

When using this product, confirm the safety information shown on the bottom of the unit and the AC adapter label.

D3-4-2-2-4_B1_En

This product is for general household purposes. Any failure due to use for other than household purposes (such as long-term use for business purposes in a restaurant or use in a car or ship) and which requires repair will be charged for even during the warranty period.

K041_A1_En

CAUTION

The **STANDBY/ON** switch on this unit will not completely shut off all power from the AC outlet. Since the power cord serves as the main disconnect device for the unit, you will need to unplug it from the AC outlet to shut down all power. Therefore, make sure the unit has been installed so that the power cord can be easily unplugged from the AC outlet in case of an accident. To avoid fire hazard, the power cord should also be unplugged from the AC outlet when left unused for a long period of time (for example, when on vacation).

D3-4-2-2-2a*_A1_En

CAUTION

This product is a class 1 laser product classified under the Safety of laser products, IEC 60825-1:2007.

CLASS 1 LASER PRODUCT

D58-5-2-2a_A1_En

WARNING

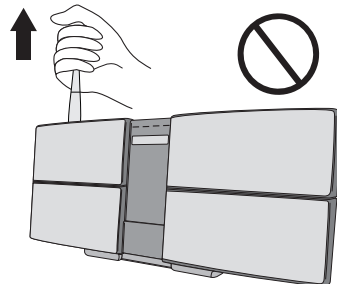
Store small parts out of the reach of children and infants. If accidentally swallowed, contact a doctor immediately.

D41-6-4_A1_En

Store the AC adapter out of the reach of children and infants.

The AC adapter cord may accidentally wind around the neck and it may cause suffocation.

Do not lift this device by holding the wireless LAN antenna, since damage or personal injury may result.



Information for users on collection and disposal of old equipment and used batteries

(Symbol for equipment)



These symbols on the products, packaging, and/or accompanying documents mean that used electrical and electronic products and batteries should not be mixed with general household waste.

For proper treatment, recovery and recycling of old products and used batteries, please take them to applicable collection points in accordance with your national legislation.

(Symbol examples for batteries)



By disposing of these products and batteries correctly, you will help to save valuable resources and prevent any potential negative effects on human health and the environment which could otherwise arise from inappropriate waste handling.

For more information about collection and recycling of old products and batteries, please contact your local municipality, your waste disposal service or the point of sale where you purchased the items.

These symbols are only valid in the European Union.

For countries outside the European Union:

If you wish to discard these items, please contact your local authorities or dealer and ask for the correct method of disposal.



K058a_A1_En

AC adapter caution

- Make sure to grasp the body of the AC adapter when removing it from the power outlet. If you pull the power cord, it may become damaged which could lead to fire and/or electrocution.
- Do not attempt to plug in or remove the AC adapter with wet hands. This may result in electrocution.
- Insert the prongs of the AC adapter all the way into the power outlet. If the connection is incomplete, heat may be generated which could lead to fire. Furthermore, contact with the connected prongs of the adapter may result in electrocution.
- Do not insert the AC adapter into a power outlet where the connection remains loose despite inserting the prongs all the way into the outlet. Heat may be generated which could lead to fire. Consult with the retailer or an electrician regarding replacement of the power outlet.
- Do not place the unit, a piece of furniture, etc., on the power cord, or pinch the cord. Never make a knot in the cord or tie it with other cords. The power cords should be routed such that they are not likely to be stepped on. A damaged AC adapter and power cord can cause a fire or give you an electrical shock. Check the AC adapter and the power cord once in a while. When you find it damaged, ask your nearest PIONEER authorized service center or your dealer for a replacement.

Radio wave caution

This unit uses a 2.4 GHz radio wave frequency, which is a band used by other wireless systems (Microwave ovens and Cordless phones, etc.). In this event noise appears in your television image, there is the possibility this unit (including products supported by this unit) is causing signal interference with the antenna input connector of your television, video, satellite tuner, etc. In this event, increase the distance between the antenna input connector and this unit (including products supported by this unit).

- Pioneer is not responsible for any malfunction of the compatible Pioneer product due to communication error/malfunions associated with your network connection and/or your connected equipment. Please contact your Internet service provider or network device manufacturer.
- A separate contract with/payment to an Internet service provider is required to use the Internet.

POWER-CORD CAUTION

Handle the power cord by the plug. Do not pull out the plug by tugging the cord and never touch the power cord when your hands are wet as this could cause a short circuit or electric shock. Do not place the unit, a piece of furniture, etc., on the power cord, or pinch the cord. Never make a knot in the cord or tie it with other cords. The power cords should be routed such that they are not likely to be stepped on. A damaged power cord can cause a fire or give you an electrical shock. Check the power cord once in a while. When you find it damaged, ask your nearest PIONEER authorized service center or your dealer for a replacement.

S002*_A1_En

Thank you for buying this Pioneer product.

Please read through these operating instructions so that you will know how to operate your model properly. After you have finished reading the instructions, put them in a safe place for future reference.

Contents

01 Before you start

What's in the box	6
Loading the batteries in the remote control	6

02 Part names and functions

Remote control	7
Using the remote control	8
Front panel	9
Top panel/Side panel	10

03 Connections

Connecting antenna	11
Using external antennas	11
Connecting to the network through the LAN interface or WLAN antenna	11
Connecting using LAN cable	12
Connecting using wireless LAN	12
Plugging in	12
Hang from the wall to use	13

04 Getting started

To turn the power on	14
Setting the clock	14
General control	14
Input function	14
Network function	14
Display brightness control	14
Volume auto setting	14
Volume control	14
Muting	15
Sound controls	15
Equalizer	15
P.BASS control	15
Bass/treble control	15
Setting the wake-up timer	15
Calling the wake-up timer	16
Canceling the wake-up timer	16
Using the wake-up timer	16
Using the sleep timer	16
Using Headphones	16

05 iPod/iPhone/iPad playback

Confirming what iPod/iPhone/iPad models are supported	17
Connecting your iPod/iPhone	17
When closing the iPod/iPhone dock	18
Connecting iPod/iPhone/iPad using supplied iPad stand	18
Playing iPod/iPhone/iPad	18

06 Disc playback

Playing discs or files	19
Advanced CD or MP3/WMA disc playback	20
Direct track search	20
Repeat play	20
Random play	20
Programmed play (CD or MP3/WMA)	20
About folder playback order	21
Specify the folder to play	21
Switch the display contents	21

07 USB playback

Playing USB storage devices	22
Repeat play	22
Random play	22
Specify the folder to play	23
Switch the display contents	23
Playing in the desired order (Programmed Play)	23

08 Connect to network

Network setting	24
A: Using a web browser on a computer supporting wired LAN to make connecting settings for the unit	25
B: Wired connection to a router with DHCP server	26
C: Connections for wireless LAN using WPS-PBC function	27
D: Connecting to a router without WPS-PBC function	27
E: Connection settings using an iOS device	28
F: Wireless Direct	29
Network type setting	29

09 Internet Radio

Listening to the Internet Radio	30
Connecting to a LAN network	30
Playing music on Internet Radio	30
Playing back your favorite songs	30
Installing ControlApp	31
Using ControlApp	31

10 Music server

Introduction	32
Playing music on Music server	32
About playable DLNA network devices	32

11 AirPlay

Using AirPlay on iPod touch, iPhone, iPad and iTunes	33
About the DHCP server function	33
Authorizing this unit	33
Playing audio files stored on computers or other components	33
Connecting to the LAN network	33
Using AirPlay to enjoy music	33
Operating AirPlay from an iPod/iPhone/iPad	34

12 Using the tuner

Listening to the radio broadcasts	35
Tuning	35
Saving station presets	35
To recall a memorized station	36
To scan the preset stations	36
To erase entire preset memory	36
Listening to the DAB+	36
About DAB+ (Digital Audio Broadcasting)	36
Auto Scan	36
Selecting a station in the station list	36
Manual tune	37
Changing the information display	37
Memorising a station	37
DAB Frequency table (BAND III)	37

13 Other connections

Connecting auxiliary components	38
---------------------------------	----

14 Additional information

Troubleshooting	39
Firmware update	44
Dimensions (Rear)	46
Playable discs and formats	47
Regarding copy protected CDs	47
Supported audio file formats	47
Cautions on use	47
When moving this unit	47
Do not use the dock to move this unit	47
Place of installation	47
Do not place objects on this unit	48
About condensation	48
Cleaning the product	48
Cleaning the lens	48
Handling discs	48
Storing	48
Cleaning discs	48
About specially shaped discs	48
About network playback	49
Windows Media Player	49
DLNA	49
Content playable over a network	49
Disclaimer for Third Party Content	49
About playback behavior over a network	49
Authorizing this unit	49
aacPlus	50
FLAC	50
Supported audio file formats	50
About Wi-Fi®	51
About iPod/iPhone/iPad	51
Apple Lossless Audio Codec	51
Auto power off setting	52
Setting quick start mode	52
Setting quick start mode	52
Canceling quick start mode	52
Restoring all the settings to the defaults	52
Specifications	52

Chapter 1:

Before you start

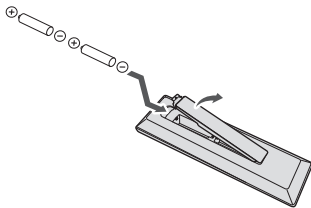
What's in the box

Please confirm that the following accessories are in the box when you open it.

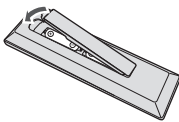
- Remote control
- Power cord
- AC adapter
- AAA batteries (R03) x 2
- DAB/FM wire antenna
- iPad stand
- Warranty card
- Operating instructions (this document)

Loading the batteries in the remote control

1 Open the rear lid and load the batteries as illustrated below.



2 Close the rear lid.



The batteries included with the unit have been provided to allow you check product operation and may not last long. We recommend using alkaline batteries that have a longer life.

CAUTION

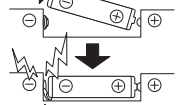
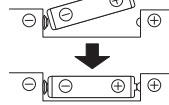
- When inserting the batteries, make sure not to damage the springs on the battery's \ominus terminals. This can cause batteries to leak or over heat.



Insert the battery by aligning the \ominus pole against the remote control's \ominus terminal



If a battery pushes and bends the \ominus terminal out of shape, there is possibility of the alkaline battery shorting out



The \ominus terminal is bent out of shape

- Do not use any batteries other than the ones specified. Also, do not use a new battery together with an old one.
- When loading the batteries into the remote control, set them in the proper direction, as indicated by the polarity marks (\oplus and \ominus).
- Do not heat batteries, disassemble them, or throw them into flames or water.
- Batteries may have different voltages, even if they are the same size and shape. Do not use different types of batteries together.
- To prevent leakage of battery fluid, remove the batteries if you do not plan to use the remote control for a long period of time (1 month or more). If the fluid should leak, wipe it carefully off the inside of the case, then insert new batteries. If a battery should leak and the fluid should get on your skin, flush it off with large quantities of water.
- When disposing of used batteries, please comply with governmental regulations or environmental public institution's rules that apply in your country/area.

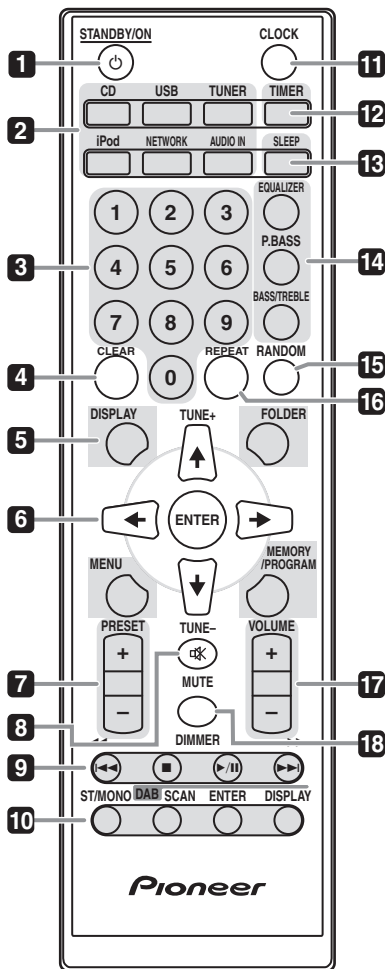
WARNING

Do not use or store batteries in direct sunlight or other excessively hot place, such as inside a car or near a heater. This can cause batteries to leak, overheat, explode or catch fire. It can also reduce the life or performance of batteries.

Chapter 2:

Part names and functions

Remote control



1 **STANDBY/ON**

Switches the unit between standby and on (page 14).

2 **Input function buttons**

Use to select the input source to this unit (pages 18, 19, 22, 24, 30, 32, 35 and 38).

3 **Numeric buttons (0 to 9)**

Use to enter the number (page 20).

4 **CLEAR**

Use to clear the programmed play (pages 20 and 36).

5 **Control buttons**
DISPLAY

Press to change the display for songs playing back from CD or USB (page 21).

FOLDER

Use to select the folder of the MP3/WMA disc or USB mass storage device (pages 21 and 23).

MENU

Use to access the menu.

MEMORY/PROGRAM

Use to memory or program the MP3/WMA disc (page 20).

6 **(TUNE +/-), ENTER**

Use to select/switch system settings and modes, and to confirm actions.

Use **TUNE +/-** can be used to find radio frequencies (page 35).

7 **PRESET +/-**

Use to select preset radio stations (page 35).

8 **MUTE**

Mutes/unmutes the sound (page 15).

9 **Playback control buttons**

Use to control each function after you have selected it using the input function buttons (page 19).

10 Tuner control buttons**ST/MONO**

Use to switch the sound mode between stereo and monaural (page 35).

DAB SCAN

Use to scan for DAB radio station (page 36).

DAB ENTER

Use to confirm the DAB radio station (page 36).

DAB DISPLAY

Press to change the DAB display for information mode (page 37).

11 CLOCK

Use for setting the clock (page 14).

12 TIMER

Used when setting the wake-up timer (page 15).

13 SLEEP

See *Using the sleep timer* on page 16.

14 Sound control buttons

Adjust the sound quality (page 15).

15 RANDOM

Randomize order of track playback from a CD, iPod or USB (pages 20 and 22).

16 REPEAT

Press to change the repeat play setting from a CD, iPod or USB (pages 20 and 22).

17 Volume control buttons

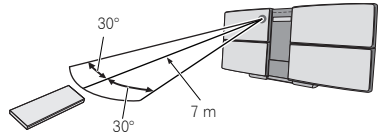
Use to set the listening volume (page 14).

18 DIMMER

Dims or brightens the display. The brightness can be controlled in four steps (page 14).

Using the remote control

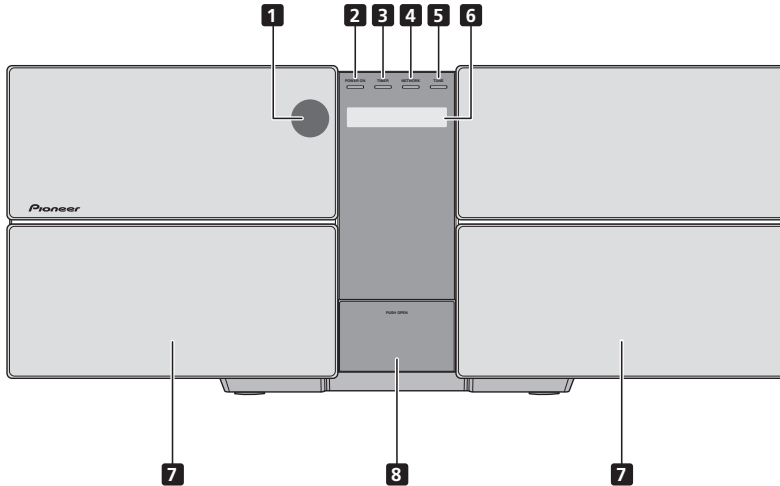
The remote has a range of about 7 m at an angle of about 30° from the remote sensor.



Keep in mind the following when using the remote control:

- Make sure that there are no obstacles between the remote and the remote sensor on the unit.
- Remote operation may become unreliable if strong sunlight or fluorescent light is shining on the unit's remote sensor.
- Remote controllers for different devices can interfere with each other. Avoid using remotes for other equipment located close to this unit.
- Replace the batteries when you notice a fall off in the operating range of the remote.

Front panel



1 Remote sensor

Receives the signals from the remote control.

2 POWER ON indicator

When the power is on, this indicator lights.

3 TIMER indicator

Lit when the unit power is off but when the timer setting is activated.

4 NETWORK

When the network status changes, this indicator lights. The indicator's color changes as noted below.

Lights white - good connection

Flashes white - weak signal

Flashes red - connection failure

Note

- For details of other colors See *Connect to network* on page 24.

5 TUNE

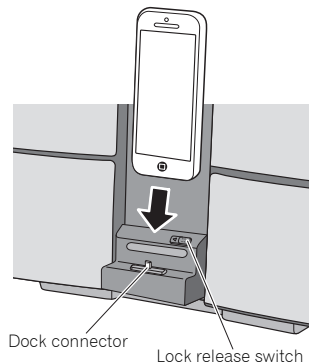
Will light up when it is receiving a station.

6 Main display

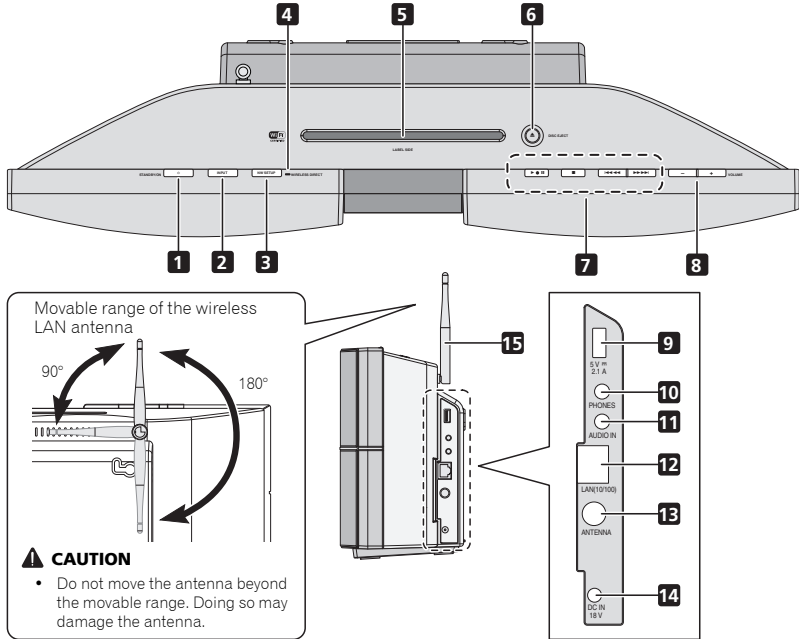
7 Speaker

8 iPod/iPhone dock

To connect the iPod/iPhone, press the PUSH OPEN panel (page 17).



Top panel/Side panel



1 STANDBY/ON button

Switches the unit between standby and on (page 14).

2 INPUT button

Selects the input source.

3 NW SETUP

Use to set the wireless network (page 24).

4 WIRELESS DIRECT

See *Connect to network* on page 24.

5 Disc slot

Eject the disc.

6 EJECT

Eject the disc.

7 Playback control buttons

Select the desired track or file to be played back. Stop current playback. Stop playback or resume playback from the point where it was paused.

8 VOLUME +/-

Use to set the listening volume (page 14).

9 USB terminal

Use to connect your USB mass storage device or Apple iPod/iPhone/iPad as an audio source (pages 18 and 22).

10 Headphone socket

Use to connect headphones. When the headphones are connected, there is no sound output from the speakers (page 16).

11 AUDIO IN socket

Use to connect an auxiliary component using a stereo mini-jack cable (page 38).

12 LAN (10/100) connector

Connect this unit to the router using a LAN cable (page 11).

13 DAB/FM antenna socket

Connect provided DAB/FM wire antenna here (page 11).

14 DC IN terminal

Plug the supplied AC adapter (page 12).

15 Wireless LAN antenna

Receives signals from wireless devices.



Note

- This is not an FM antenna.

Chapter 3:

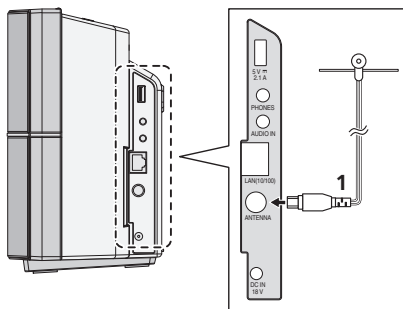
Connections

CAUTION

- Be sure to turn off the power and unplug the power cord from the power outlet whenever making or changing connections.
- Connect the power cord after all the connections between devices have been completed.

Connecting antenna

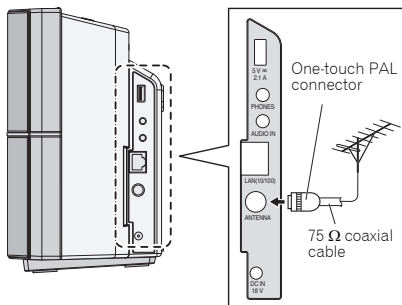
Connect the DAB/FM wire antenna as shown below. To improve reception and sound quality, connect external antennas (see *Using external antennas* below).

**1 Connect the DAB/FM wire antenna into the DAB/FM antenna socket.**

For best results, extend the DAB/FM antenna fully and fix to a wall or door frame. Don't drape loosely or leave coiled up.

Using external antennas**To improve DAB/FM reception**

Use a PAL connector (not supplied) to connect an external DAB/FM antenna.

**To customers in Norway and Sweden****CAUTION**

- "Apparater som er koplet til beskyttelsesjord via nettplugg og/eller via annet jordtilkoplest utstyr - og er tilkoplest et koaksialbasert kabel-TV nett, kan forårsake brannfare. For å unngå dette skal det ved tilkopling av apparater til kabel-TV nett installeres en galvanisk isolator mellom apparatet og kabel-TV nettet."
- "Apparater som er kopplade till skyddsjord via jordat väggutt och/eller via annan utrustning och samtidigt är kopplad till kabel-TV nät kan i vissa fall medföra risk för brand. För att undvika detta skall vid anslutning av apparaten till kabel-TV nät galvanisk isolator finnas mellan apparaten och kabel-TV nätet."

Connecting to the network through the LAN interface or WLAN antenna

By connecting this unit to the network via the LAN interface, you can play back audio files stored on components on the network, including your computer, and listen to Internet Radio stations.

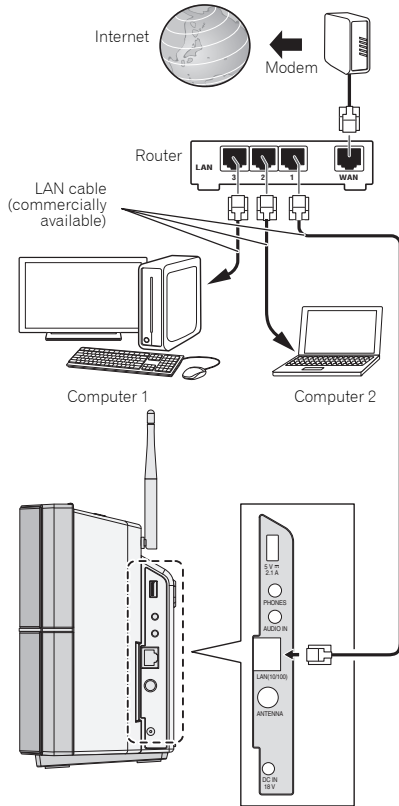
Connect the LAN terminal on this unit to the LAN terminal on your router (with or without the built-in DHCP server function) with a straight LAN cable (CAT 5 or higher). Also wireless connection to the network is possible.

Turn on the DHCP server function of your router. If your router does not have a built-in DHCP server function, you have to set up the network manually. For details, see page 24.

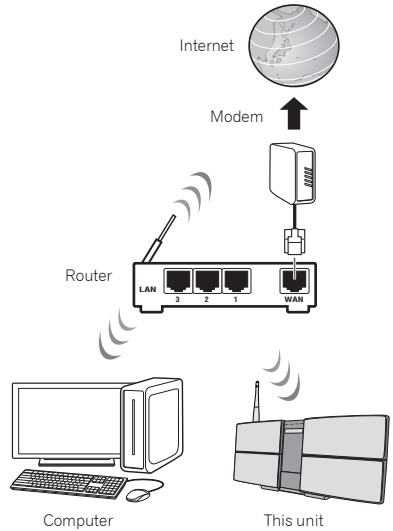
Note

- To use services such as Internet Radio, you must conclude a contract with an Internet service provider.
- Photo or video files cannot be played back.

Connecting using LAN cable

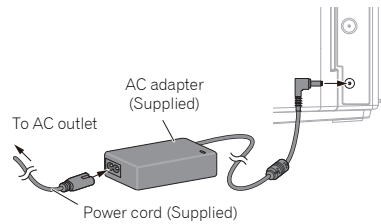


Connecting using wireless LAN



Plugging in

After you've finished making all connections, plug the unit into an AC outlet.



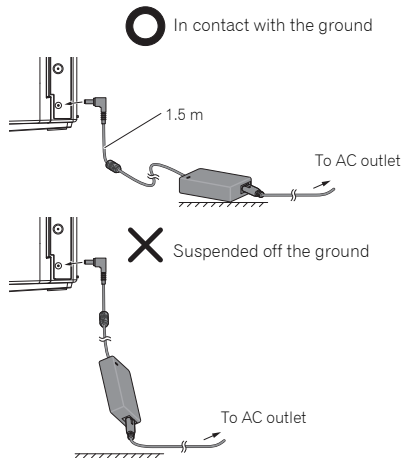
1 Plug the supplied AC adapter into the DC IN socket on the side of the unit.

2 Plug the supplied power cord into the AC adapter then plug the other end into an AC outlet.

⚠ CAUTION

- Do not use any power cord other than the one supplied with this unit.
- Do not use the supplied power cord for any purpose other than that described below.

- The cord length from the unit to the AC adaptor is 1.5 m long. Make sure that you use the AC adaptor so that it is not suspended in air.



Hang from the wall to use

⚠ CAUTION

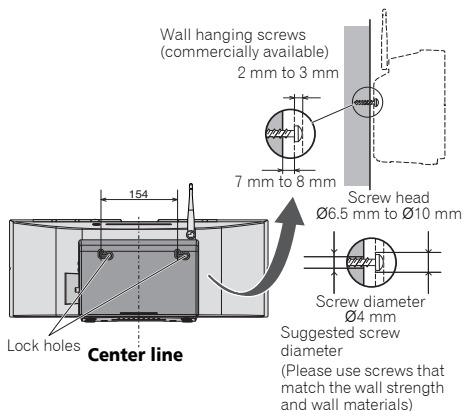
When hanging the unit from a wall, firmly screw the wall hanging screws (sold separately) into the wall, and confirm that the wall is capable of holding the unit safely. If the materials or strength of the wall cannot support the weight of the unit, then there is the possibility of the unit falling off.

Do not connect the iPad/iPad mini to the dock. The unit is not compatible. Do not connect any device that is not compatible. Please refer to page 17 for compatible or supported models. The iPad/iPad mini may fall and cause injury, or tilt over and cause damage to the device (especially around the connector section).

Hang the unit from the wall only after all connections (including USB and headphones) are completed. If redoing the connections, take the unit off the wall first. When connections are completed, connect the power cord to the AC outlet while hanging the unit on the wall.

1 Screw the wall hanging screws into the wall, putting them the specified attachment measurement (154 mm) apart.

See *Dimensions (Rear)* on page 46.



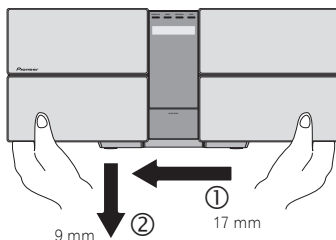
2 Insert the wall hanging screws into the lock holes.

🔧 Note

- Do not take your hands off the unit as the unit is still not attached and may fall. Immediately continue on to step 3.

3 Slide to the left, and drop down.

Please confirm that the unit is securely attached.



🔧 Note

- When taking off the wall, move the unit in the opposite direction from when mounting. Move up then slide to the right.
- When attaching the unit to the wall, there is the possibility of it falling depending on how it is attached. Take due care to avoid any accidents.
- Select a location for the placement/installation of unit that is sufficiently strong enough to hold the weight of the unit. If you do not know the strength etc. of the wall, then consult with a professional.
- The company bears no responsibility for accidents or damages caused by inadequate installation/attachment, incorrect use, modifications, natural disasters etc.
- Place all cables along the wall to prevent anyone from tripping over them.
- When the unit is hanging from a wall, pay extra attention to make sure your iPod/iPhone does not fall.
- Do not hold the unit by grabbing onto the iPod/iPhone dock.

Chapter 4:

Getting started

To turn the power on

Press the **STANDBY/ON** to turn the power on.

About startup time:

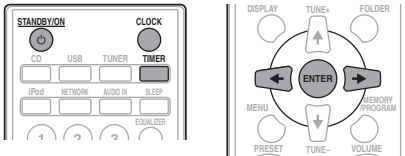
About 30 seconds are required between after the power turns on until the unit is actually ready to use. The time required for startup can be reduced by setting the quick start mode to on.

After use:

Press the **STANDBY/ON** to enter the power stand-by mode.

**Note**

- In standby mode, if iPod/iPhone/iPad is connected, the unit turns charge mode.

Setting the clock

- Press **STANDBY/ON** to turn the power on.
- Press **CLOCK** on the remote control.
"CLOCK" is shown on the main display.
- Press **ENTER**.
- Press **←/→** to set the day, then press **ENTER**.
- Press **←/→** to set the hour, then press **ENTER**.
- Press **←/→** to set the minute, then press **ENTER** to confirm.
- Press **ENTER**.

To confirm the time display:

Press the **CLOCK**. The time display will appear for about 10 seconds.

To readjust the clock:

Perform "Setting the clock" from step 1.

**Note**

- When power supply is restored after unit is plugged in again or after a power failure, reset the clock.

General control**Input function**

When the **INPUT** on main unit is pressed, the current function will change to different mode. Press the **INPUT** repeatedly to select desired function.

**Network function**

When pressing **NETWORK** on the remote control, the current network function will change to different network mode. Press the **NETWORK** repeatedly to select desired network function. The selected function is displayed on the front panel display.

**Display brightness control**

Press **DIMMER** to dims the display brightness. The brightness can be controlled in four steps.

Volume auto setting

If you turn off and on the main unit with the volume set to 31 or higher, the volume starts at 30.

Volume control

Press the **VOLUME +/-** on the unit or press **VOLUME +/-** on the remote control to increase or decrease the volume.

CAUTION

- The sound level at a given volume setting depends on speaker efficiency, location, and various other factors. It is advisable to avoid exposure to high volume levels. Do not turn the volume on to full at switch on. Listen to music at moderate levels. Excessive sound pressure from earphones and headphones can cause hearing loss.

Muting

The volume is muted temporarily when pressing the **MUTE** on the remote control. Press again to restore the volume.

Sound controls

Equalizer

When the **EQUALIZER** is pressed, the current mode setting will be displayed. To change to a different mode, press the **EQUALIZER** repeatedly until the desired sound mode appears.

→ FLAT	A flat and basic sound.
↓	
ACTIVE	A powerful sound that emphasizes low and high tones.
↓	
DIALOGUE	A sound that allows the radio or vocals to be heard more easily.
↓	
NIGHT	A sound that can be enjoyed at night even with lower volume.
↓	
WALL	When setting on the wall, adjust so that the bandwidth balance improves.
↓	
COMP	Will improve music quality when compressed audio files like MP3 is played.

P.BASS control

When the power is first turned on, the unit will enter the **P.BASS** mode which emphasizes the bass frequencies. To cancel the **P.BASS** mode, press the **P.BASS** on the remote control.

Bass/treble control

Press the **BASS/TREBLE**, then press **↑/↓/←/→** to adjust the bass or treble.

Note

- The **EQUALIZER** and **P.BASS** cannot operate simultaneously. The most recently selected of these two functions will be the one used.
- **BASS/TREBLE** can operate alongside either the **EQUALIZER** or **P.BASS**.

When one of the above two functions is selected, the function that is not selected will be displayed as follows.

- 1 When **P.BASS** setting (ON/OFF) is changed
 - **EQUALIZER** : FLAT
- 2 When **EQUALIZER** setting is changed
 - **P.BASS** : OFF

Setting the wake-up timer

Used to change the existing timer setting, or to set a new timer.

- 1 Press **⏻** **STANDBY/ON** to turn the power on.
- 2 Press **TIMER**.
- 3 Press **←/→** to select "ONCE" or "DAILY", then press **ENTER**.
 - ONCE – Works once only at a preset time.
 - DAILY – Works at the preset time on a preset day.
- 4 Press **←/→** to select "TIMER SET", then press **ENTER**.
- 5 Press **←/→** to select the timer playback source, then press **ENTER**.
 - CD, DAB, FM, USB/IPOD, IPOD, AUDIO IN and I RADIO can be selected as the playback source.
- 6 Press **←/→** to select the timer day, then press **ENTER**.
- 7 Press **←/→** to set the hour, then press **ENTER**.
- 8 Press **←/→** to set the minute, then press **ENTER**.
 - Set the time to finish as in steps 7 and 8 above.
- 9 Adjust the volume press **VOLUME +/-**, then press **ENTER**.
- 10 Press **⏻** **STANDBY/ON** to enter the power standby mode.
 - The **TIMER** indicator lights up.

Calling the wake-up timer

An existing timer setting can be reused.

- 1 Follow steps 1 to 3 in "Setting the wake-up timer".
- 2 Press **←/→** to select "TIMER ON", then press **ENTER**.

Canceling the wake-up timer

Turn off the timer setting.

- 1 Follow steps 1 to 3 in "Setting the wake-up timer".
- 2 Press **←/→** to select "TIMER OFF", then press **ENTER**.

Using the wake-up timer

- 1 Press **⏻** STANDBY/ON to turn the power off.
- 2 At the wake-up time, this unit will turn on automatically and play the selected input function.

Note

- If at the wake-up time an iPod/iPhone/iPad is not connected to the unit or a disc is not inserted, the unit will be turned on but will not play back the track.
- Some discs may not be played automatically at the wake-up time.
- When setting the timer set at least one minute between the start and end time.
- If at the wake-up time the unit is not connected to the network, the wake up timer will turn on but the Internet Radio will not be played.
- The last station to be selected will be played on the Internet Radio. If the Internet Radio has never been played, then no station will be selected to be played.

Using the sleep timer

The sleep timer switches off the unit after a specified time so you can fall asleep without worrying about it.

- 1 Press **SLEEP** repeatedly to select a switch off time.

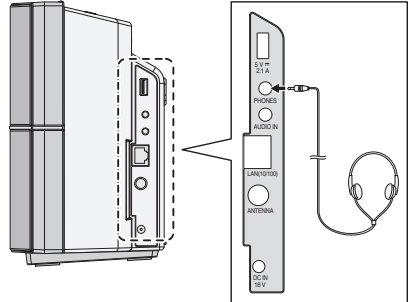
Choose between 10 min, 20 min, 30 min, 60 min, 90 min, 120 min, 150 min, 180 min or OFF. The newly set value displays for 3 seconds, and then the setting is completed.

Note

- The sleep timer can be set by pressing **SLEEP** while the remaining time is displayed.

Using Headphones

Connect the headphones plug to the **PHONES** terminal. When the headphones are connected, there is no sound output from the speakers.



- Do not turn the volume on to full at switch on and listen to music at moderate levels. Excessive sound pressure from earphones and headphones can cause hearing loss.
- Before plugging in or unplugging the headphone, reduce the volume.
- Be sure your headphone has a 3.5 mm diameter plug and impedance between 16 Ω and 50 Ω . The recommended impedance is 32 Ω .

Chapter 5:

iPod/iPhone/iPad playback

Merely by connecting your iPod/iPhone/iPad to this unit, you can enjoy high-quality sound from your iPod/iPhone/iPad. Playback setting for iPod/iPhone/iPad music can be performed from this unit or the iPod/iPhone/iPad itself.

Confirming what iPod/iPhone/iPad models are supported

The iPod/iPhone/iPad playable on this unit are shown below.

iPod/iPhone/iPad	Dock connector (Lightning connector)	USB terminal
iPhone 5	✓	✓
iPhone 4S	—	✓
iPhone 4	—	✓
iPhone 3GS	—	✓
iPhone 3G	—	✓
iPhone	—	✓
iPad mini	—	✓
iPad (3/4G)	—	✓
iPad 2	—	✓
iPod nano 7G	✓	✓
iPod nano (3/4/5/6G)	—	✓
iPod touch 5G	✓	✓
iPod touch (1/2/3/4G)	—	✓

⚠ CAUTION

Do not connect the iPad/iPad mini to the dock. The unit is not compatible. Do not connect any device that is not compatible. The iPad/iPad mini may fall and cause injury, or tilt over and cause damage to the device (especially around the connector section).

📝 Note

- Pioneer does not guarantee that this unit plays iPod/iPhone/iPad models other than the ones specified.
- Some functions may be restricted depending on the model or software version.
- iPod/iPhone/iPad is licensed for reproduction of non-copyrighted materials or materials the user is legally permitted to reproduce.
- Features such as the equalizer cannot be controlled using this system, and we recommend switching the equalizer off before connecting.

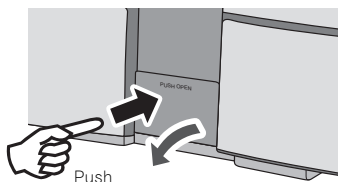
- Pioneer cannot under any circumstances accept responsibility for any direct or indirect loss arising from any inconvenience or loss of recorded material resulting from iPod/iPhone/iPad failure.
- For detailed instructions on using the iPod/iPhone/iPad, please refer to the manual supplied with the iPod/iPhone/iPad.
- This system has been developed and tested for the software version of iPod/iPhone/iPad indicated on the website of Pioneer (<http://pioneer.jp/homeav/support/ios/eu/>).
- Installing software versions other than indicated on the website of Pioneer to your iPod/iPhone/iPad may result in incompatibility with this system.
- This unit cannot be used to record CD, tuner or other content on an iPod/iPhone/iPad.

Connecting your iPod/iPhone

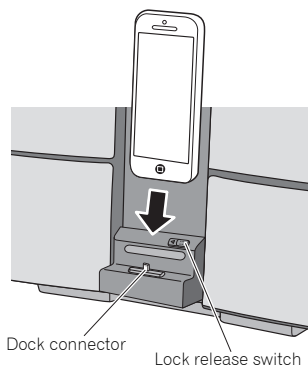
🔑 Important

- If you use a commercially available protective cover with your iPod/iPhone, you may not be able to connect your iPod/iPhone to the dock connector.

1 Press the PUSH OPEN panel.



2 Connect your iPod/iPhone.



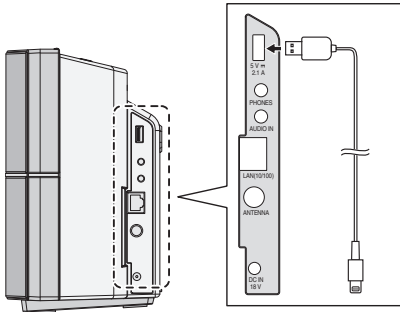
When closing the iPod/iPhone dock

- When closing the dock, slide the lock release switch once to the left. This will release the lock on the dock, so return the dock to the original position.

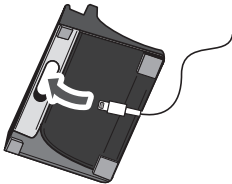


Connecting iPod/iPhone/iPad using supplied iPad stand

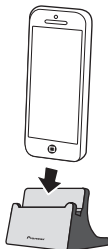
- 1 Connect the iPod/iPhone/iPad cable to the USB terminal on the side of the unit.



- 2 Pass the iPod/iPhone/iPad cable through the bottom of the stand and connect it to the iPod/iPhone/iPad.



- 3 Set the iPod/iPhone/iPad on the stand.



Playing iPod/iPhone/iPad

- 1 Connect your iPod/iPhone/iPad.

- If an iPod/iPhone/iPad is connected while the unit is turned on, playback of the iPod/iPhone/iPad will not begin.

- 2 Press iPod or USB as the input source.

"IPOD" or "USB/IPOD" is shown on the main display.

- The available iPod/iPhone/iPad playback controls from the unit are **▶/||**, **◀◀**, **▶▶**.
- In the following case, operate your iPod/iPhone/iPad directly:
 - Searching a file by artist name or genre.
 - Playing in the repeat or random mode.

CAUTION

- When your iPod/iPhone/iPad is connected to this unit and you wish to operate the iPod/iPhone/iPad directly, be sure to steady the iPod/iPhone/iPad with the other hand to prevent malfunctions due to faulty contacts.

Note

- For detailed instructions on using the iPod/iPhone/iPad, please refer to the manual supplied with the iPod/iPhone/iPad.
- iPod/iPhone/iPad recharging occurs whenever an iPod/iPhone/iPad is connected to this unit. (This function is supported in standby mode as well.)
- When input is switched from iPod to another function, iPod/iPhone/iPad playback is temporarily stopped.

Important

If this unit cannot play your iPod/iPhone/iPad, perform the following troubleshooting checks:

- Check whether the iPod/iPhone/iPad is supported by this unit.
- Reconnect the iPod/iPhone/iPad to the unit. If this doesn't seem to work, try resetting your iPod/iPhone/iPad.
- Check that iPod/iPhone/iPad software is supported by the unit.

If the iPod/iPhone/iPad cannot be operated, check the following items:

- Is the iPod/iPhone/iPad connected correctly? Reconnect the iPod/iPhone/iPad to the unit.
- Is the iPod/iPhone/iPad experiencing a hangup? Try resetting the iPod/iPhone/iPad, and reconnect it to the unit.

Chapter 6:

Disc playback

This system can play back a standard CD, CD-R/RW in the CD format and CD-R/RW with MP3 or WMA files, but cannot record on them. Some audio CD-R and CD-RW discs may not be playable due to the state of the disc or the device that was used for recording.

MP3:

MP3 is a form of compression. It is an acronym which stands for MPEG Audio Layer 3. MP3 is a type of audio code which is processed by significant compression from the original audio source with very little loss in sound quality.

- This system supports MPEG-1/2 Audio Layer 3 (Sampling rates: 8 kHz to 48 kHz; Bit rates: 32 kbps to 320 kbps).
- During VBR file playback, time counter in the display may differ from its actual playback time.

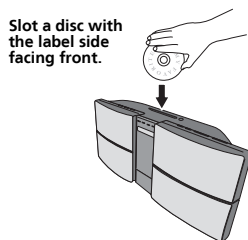
WMA:

WMA (Windows Media Audio) files are Advanced System Format files that include audio files which are compressed with Windows Media Audio codec. WMA is developed by Microsoft as an audio format file for Windows Media Player.

- This system supports WMA (Sampling rates: 32 kHz/44.1 kHz/48 kHz; Bit rates: 64 kbps to 320 kbps).
- During VBR file playback, time counter in the display may differ from its actual playback time.

Playing discs or files

- 1 Press **⏻** STANDBY/ON to turn the power on.
- 2 Press **CD** on the remote control or **INPUT** repeatedly on the main unit to select CD input.
- 3 Slot a disc.



- Insert it in the center of the disc slot, and press in gently from above.
- The disc will then be automatically drawn into the slot.

4 Press **▶II** to start playback.

After the last track is played, the unit will stop automatically.

⚠ CAUTION

- Do not insert two or more discs into the slot at once.
- Do not play discs of special shapes (heart, octagon, etc.). It may cause malfunctions.
- If the disc does not load smoothly, do not attempt to force it. Remove it from the slot and try inserting it again. Attempting to force a disc causes damage or malfunction.
- Do not touch the recording surface of the disc, since the disc may not play properly if it has fingerprints or other soiling.
- 8 cm discs cannot be played. Also do not attempt to use adapters for 8 cm CD to play such discs, since malfunction may result.
- Do not insert water and other foreign objects from the disc slot. This may cause malfunction.

📖 Note

- Due to the structure of the disc information, it takes longer to read an MP3/WMA disc than a normal CD (approximately 20 to 90 seconds).
- When the beginning of the first track is reached during fast reverse, the unit will enter the playback mode (only for CD).
- If TV or radio interference occurs during CD operation, move the unit away from the TV or radio.

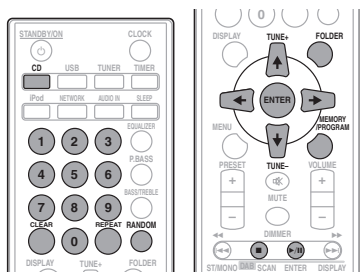
⚙ Tip

- When no operation has done in CD mode and the audio file is not played for more than 20 minutes, the power will automatically turn off.
- Auto power off can be switched to **ON/OFF** (page 52).

Various disc functions

Function	Main unit	Remote control	Operation
Play			Press in the stop mode.
Stop			Press in the playback mode.
Pause			Press in the playback mode. Press ▶II to resume playback from the paused point.
Track up/down			Press in the playback or stop mode. If you press the button in the stop mode, press ▶II to start the desired track.
Fast forward/reverse			Press and hold down in the playback mode. Release the button to resume playback.

Advanced CD or MP3/WMA disc playback



Direct track search

By using the numeric buttons, the desired tracks on the current disc can be played.

Use the numeric buttons on the remote control to select the desired track while playing the selected disc.

Note

- A track number higher than the number of tracks on the disc cannot be selected.

To stop playback:

Press ■.

Repeat play

Repeat play can play one track, all tracks or a programmed sequence continuously.

To repeat one track:

Press REPEAT repeatedly until "RPT ONE" appears. Press ENTER.

To repeat all tracks:

Press REPEAT repeatedly until "RPT ALL" appears. Press ENTER.

To repeat desired tracks:

Perform steps 1 to 5 in "Programmed play (CD or MP3/WMA)" section on this page and then press REPEAT repeatedly until "RPT ALL" appears. Press ENTER.

To cancel repeat play:

Press REPEAT repeatedly until "RPT OFF" appears. Press ENTER.

Note

- After performing repeat play, be sure to press ■. Otherwise, the disc will play continuously.
- During repeat play, random play is not possible.

- When random play is set up during repeat play, the repeat play will be canceled.

Random play

The tracks on the disc can be played in random order automatically.

To random play all tracks:

Press RANDOM repeatedly until "RDM ON" appears. Press ENTER.

To cancel random play:

Press RANDOM repeatedly until "RDM OFF" appears. Press ENTER.

Note

- In random play, the unit will select and play tracks automatically. (You cannot select the order of the tracks.)
- During random play, repeat play is not possible.
- When repeat play is set up during random play, random play will be canceled.

Programmed play (CD or MP3/WMA)

You can choose up to 32 selections for playback in the order you like.

1 While in the stop mode, press MEMORY/PROGRAM on the remote control to enter the programming save mode.

2 Press <<|>> or the numeric buttons on the remote control to select the desired tracks.

3 Press ENTER to save folder and track number.

4 Repeat steps 2 to 3 for other folder/tracks. Up to 32 tracks can be programmed.

- If you want to check the programmed tracks, press MEMORY/PROGRAM.
- If you make a mistake, the last programmed tracks will be canceled by pressing CLEAR.

5 Press >>|| to start playback.

To cancel the programmed play mode:

To cancel the programmed play, press ■ twice on the remote control. The display will show "PRG CLR" and all the programmed content will be cleared.

Adding tracks to the program:

Press the MEMORY/PROGRAM. Then follow steps 2 to 3 to add tracks.

Note

- When a disc is ejected anything programmed is cleared.

- If you press the **STANDBY/ON** to enter the standby mode or change the function from **CD** to another, the programmed selections will be cleared.
- During the program operation, random play is not possible.
- When random play is set up during programmed play, programmed play will be canceled.

About folder playback order

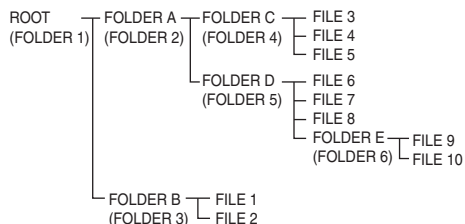
If MP3/WMA files are recorded in several folders, a folder number will be set to each folder automatically.

These folders can be selected by the **FOLDER** on the remote control. If there is no supported file formats inside the selected folder, the folder is skipped and the next folder will be selected.

Example: How the folder numbers are assigned if MP3/WMA format files are recorded are as shown below.

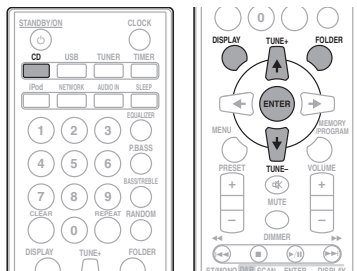
- 1 ROOT folder is set as FOLDER 1.**
- 2 As for folders inside ROOT folder (FOLDER A and FOLDER B), the folder which is recorded earlier on the disc will be set as FOLDER 2 and FOLDER 3.**
- 3 As for folder inside FOLDER A (FOLDER C and FOLDER D), the folder which is recorded earlier on the disc will be set as FOLDER 4 and FOLDER 5.**
- 4 FOLDER E that is inside FOLDER D will be set as FOLDER 6.**

- The folder and file order information which is recorded on the disc depends on the writing software. There maybe possibilities that this unit will playback the files not according to our expected playback order.
- From a disc with MP3/WMA files up to 255 folders and 999 files (including non playable files) can be read.
- The maximum number of allowable folders, including the ROOT folder, is 255 folders.



Specify the folder to play

To specify the folder to play, perform the following steps.



- 1 Press CD, and load an MP3/WMA disc.**
- 2 Press FOLDER, and press \uparrow/\downarrow to select desired playback folder.**
- 3 Press ENTER.**

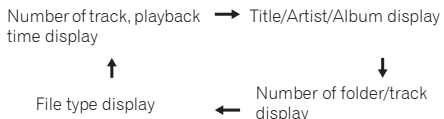
Playback will start from the first song of the selected folder.

- Even if it is stopped, it is possible to press \uparrow/\downarrow to select a folder.

Switch the display contents

- 1 Press DISPLAY.**

If the title, artist and album name has been written to the file, that information will be displayed. (The unit can only display alphanumeric characters. Non-alphanumeric character are displayed as "**".)



Note

- "Copyright protected WMA files" or "Unsupported files" cannot be played back. In these case the files will be skipped automatically.
- There may be cases where no information can be displayed.
- Displaying title, artist and album name is only supported for MP3 files.

Chapter 7:

USB playback

Playing USB storage devices

It is possible to listen to two-channel audio using the USB interface on the side of this unit.

- Pioneer does not guarantee that any file recorded on a USB storage device will play or that power will be supplied to a USB storage device. Also note that Pioneer will accept no responsibility whatsoever for loss of files on USB storage devices caused by connection to this unit.

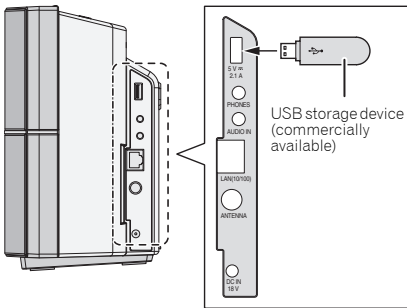
1 Press USB on the remote control or INPUT repeatedly on the main unit to select USB/IPOD input.

"USB/IPOD" is shown on the main display.

2 Connect the USB storage device.

The number of folders or files stored on the connected USB storage device appear on the main display automatically.

- This unit does not support a USB hub.
- If an iPod/iPhone/iPad is connected to the unit, the unit will automatically begin charging it.



3 When the recognition is completed, press ►|| to start playback.

- When changing to a different input source, stop the USB memory playback first, before changing.

4 Disconnect USB storage device from the USB terminal.

Turn the power off before removing the USB storage device.

Note

- USB flash drive that supports USB 2.0 can be used.

- This unit may not recognize a USB storage device, play files or supply power to a USB storage device. For details, see *When a USB storage device is connected* on page 40.
- When a USB storage device is not playing and no operations have been performed for more than 20 minutes, the unit will automatically power off.
- Auto power off can be switched to **ON/OFF** (page 52).

Repeat play

Repeat play can play one track, all tracks or a programmed sequence continuously.

To repeat one track:

Press **REPEAT** repeatedly until "RPT ONE" appears. Press **ENTER**.

To repeat all tracks:

Press **REPEAT** repeatedly until "RPT ALL" appears. Press **ENTER**.

To repeat desired tracks:

Perform steps 1 to 5 in "Programmed play (CD or MP3/WMA)" section on page 20 and then press **REPEAT** repeatedly until "RPT ALL" appears. Press **ENTER**.

To cancel repeat play:

Press **REPEAT** repeatedly until "RPT OFF" appears. Press **ENTER**.

Note

- After performing repeat play, be sure to press **■**. Otherwise, the file of USB storage device will play continuously.
- During repeat play, random play is not possible.
- When random play is set up during repeat play, the repeat play will be canceled.

Random play

The file of USB storage device can be played in random order automatically.

To random play all tracks:

Press **RANDOM** repeatedly until "RDM ON" appears. Press **ENTER**.

To cancel random play:

Press **RANDOM** repeatedly until "RDM OFF" appears. Press **ENTER**.

 **Note**

- In random play, the unit will select and play tracks automatically. (You cannot select the order of the tracks.)
- During random play, repeat play is not possible.
- When repeat play is set up during random play, random play will be canceled.

Specify the folder to play

To specify the folder to play, perform the following steps.

- 1 Press USB, and connect the USB storage device.**
- 2 Press FOLDER, and press ↑/↓ to select desired playback folder.**
- 3 Press ENTER.**

Playback will start from the first song of the selected folder.

- Even if it is stopped, it is possible to press ↑/↓, to select a folder.

Switch the display contents

The unit can display the information recorded in the USB storage device. For details, see *Switch the display contents* on page 21.

Playing in the desired order (Programmed Play)

The unit can play folders stored on a USB storage device in the desired order. For details, see *Programmed play (CD or MP3/WMA)* on page 20.

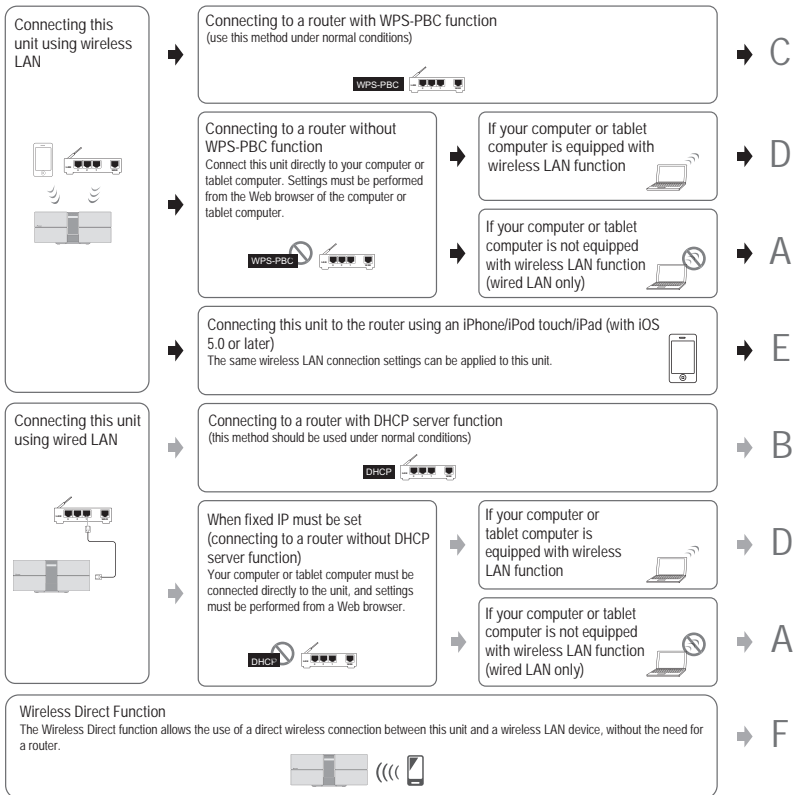
Chapter 8:

Connect to network

Network setting

If a broadband router (with built-in DHCP server function) is connected to this unit, you can simply turn on the DHCP server function without having to set up the network manually. Before you set up the network, consult with your ISP or the network manager for the required settings. It is advised that you also refer to the operation manual supplied with your network component. Any changes made to a router without the DHCP server function must be reflected to unit network settings.

If you select method C, D, E or F, confirm the LAN cable is not connected to this unit.



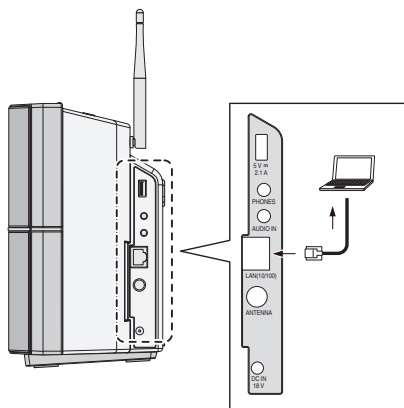
Precautions when connecting this unit to a wireless LAN router

The SSID only supports use of single-byte alphanumeric characters, together with the underbar and certain other symbols. If using another character coding, the SSID must be updated before making network settings. For more details regarding SSID, consult your router's operating instructions.

A: Using a web browser on a computer supporting wired LAN to make connecting settings for the unit

Make sure that the LAN cable connections has completed (page 12).

1 Use a LAN cable to connect the unit to the computer.



2 Connect the AC adapter, and press **STANDBY/ON**.

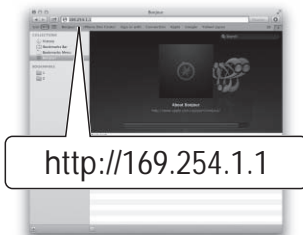
Wait for about 30 to 40 seconds.

3 Wait for the **NETWORK** indicator to change from flashing to steadily lighted red.

This may require up to 90 seconds or so.

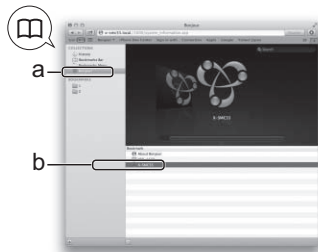
4 When the **NETWORK** indicator lights red, start your computer's Web browser, and access the URL noted below to make settings for this unit.

The Web Control menu will appear.



For Safari

Press Bookmark icon (🔖) at the upper left of the screen. Click Bonjour list (a), and then select this unit's name ("Friendly Name") (b) in Bookmark.



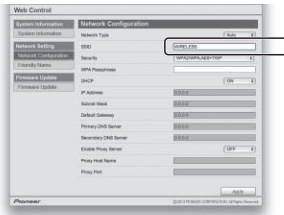
5 From the menu on the left, select **"Network Configuration"**.

If you wish to change the Friendly Name, select "Friendly Name" from the menu and change the name before selecting "Network Configuration".

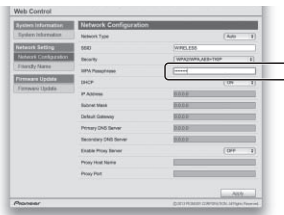


6 If using a wireless LAN connection, input the router's SSID, then select the "Security" item set on the router.

Also, if input of a fixed IP is required, set DHCP to **OFF** here and make the setting.

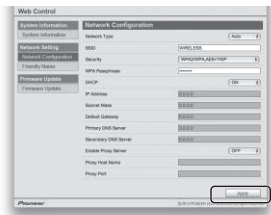


7 If a password is requested, input it here.



8 When settings are completed, click on "Apply".

The unit will automatically power down.



9 Disconnect the LAN cable from the unit and confirm that the router's power is ON.

If you intend to use the unit in a wired configuration, use a LAN cable to connect the unit to the router.

10 Press **STANDBY/ON**.

When the power is completely on, the **NETWORK** indicator will light white, indicating that settings are completed.

IP Address

The IP address to be entered must be defined within the following ranges. If the IP address defined is beyond the following ranges, you cannot play back audio files stored on components on the network or listen to Internet Radio stations.

Class A: 10.0.0.1 to 10.255.255.254 / Class B: 172.16.0.1 to 172.31.255.254 / Class C: 192.168.0.1 to 192.168.255.254

Subnet Mask

If an xDSL modem or a terminal adapter is directly connected to this unit, enter the subnet mask listed in your ISP documentation. In most of the cases, enter 255.255.255.0.

Default Gateway

If a gateway (router) is connected to this unit, enter the corresponding IP address.

Primary DNS Server/Secondary DNS Server

If there is only one DNS server address listed in your ISP documentation, enter **Primary DNS Server**. In case there are more than two DNS server addresses, enter **Alternate DNS** in the other DNS server address field.

Proxy Setup

Select **Use Proxy Server** when you connect this unit to the Internet via a proxy server. Enter the **Proxy Host Name** and the port number of your proxy server in the **Proxy Port** field.

B: Wired connection to a router with DHCP server

1 Disconnect the power cord from AC power before performing the connection between router and this unit.

Use a LAN cable to connect this unit and your router.

2 Connect the AC adapter, and press **STANDBY/ON**.

Wait for about 30 to 40 seconds.

3 when the power is fully turned on, the **NETWORK** indicator will light white.

C: Connections for wireless LAN using WPS-PBC function

1 Be sure the LAN cable is not connected to the unit.

2 Plug the power cord into an AC outlet. Press **STANDBY/ON**.

3 Press **VOLUME -** and **NW SETUP** on the main unit for 3 seconds.

The **NETWORK** indicator will flash blue.

4 Within 2 minutes, press the router's WPS.

For information regarding router operation, consult the router's operating instructions.

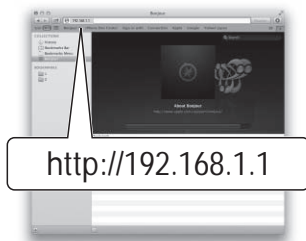
5 The network connection settings will be performed automatically, and when the connection is complete, the **NETWORK** indicator will briefly change to flashing blue, then light steadily white.

The **NETWORK** indicator will flash white when the signal is weak.

- This setting for the network has been confirmed for Mac OS X 10.7 and Safari 5.1.

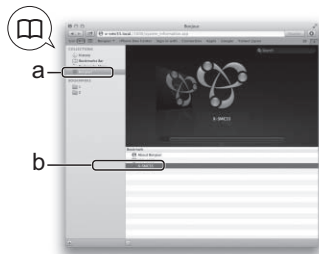
5 When the **NETWORK** indicator lights red, start your computer's Web browser, and access the URL noted below to make settings for this unit.

The Web Control menu will appear.



For Safari

Press Bookmark icon (🔖) at the upper left of the screen. Click Bonjour list (a), and then select this unit's name ("Friendly Name") (b) in Bookmark.



D: Connecting to a router without WPS-PBC function

Be sure your computer is equipped with wireless LAN function. Settings can be performed from the Web browser of the computer.

1 Be sure the LAN cable is not connected to the unit.

2 Plug the power cord into an AC outlet. Press **STANDBY/ON**.

3 Press **VOLUME -** and **NW SETUP** on the main unit for 3 seconds.

The **NETWORK** indicator will light red, and "SETUP" is shown on the main display.

4 Select **Pioneer Setup (this unit)** in the available wireless network connection of your computer.

SSID is displayed as Pioneer Setup:xxxxxx. "xxxxxx" is the lower three bytes of the MAC address.

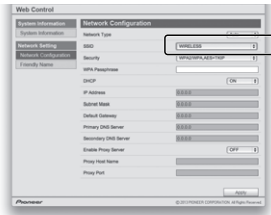
Note

- Consult the appropriate operating instructions for information regarding operation of the computer, iPhone, tablet computer or other device used.
- Since this kind of connection is not encoded, a minor security risk may be involved.

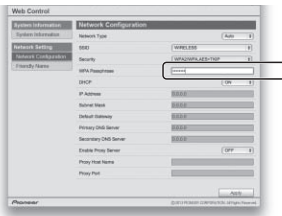
6 From the menu on the left, select "Network Configuration".

7 If using a wireless LAN connection, input the router's SSID, then select the "Security" item set on the router.

Also, if input of a fixed IP is required, set DHCP to **OFF** here and make the setting.

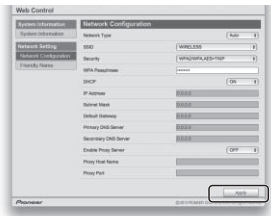


8 If a password is requested, input it here.



9 When settings are completed, click on "Apply".

The unit will automatically power down.



10 Press **STANDBY/ON**.

When the power is completely on, the **NETWORK** indicator will light white, indicating that settings are completed.

Note

- You can set the network as in the above by connecting this unit's IP address via the Safari browser even if Web control isn't selected.

E: Connection settings using an iOS device

You can apply iPod/iPhone/iPad (iOS ver 5.0 or later)'s Wi-Fi settings to this unit.

Confirm that the iOS device has a wireless connection to your router.

1 Be sure the LAN cable is not connected to the unit.

If your iPod/iPhone/iPad Wi-Fi is set to a setting that the product cannot connect to, such as IEEE 802.11n, you will be unable to apply those settings. Execute these steps after checking the Wi-Fi settings of your iPod/iPhone/iPad.

2 Unlock your iPod/iPhone/iPad that Wi-Fi connection is completed.

3 Plug the power cord into an AC outlet. Press **STANDBY/ON**.

4 Press **iPod** or **USB** on the remote control.

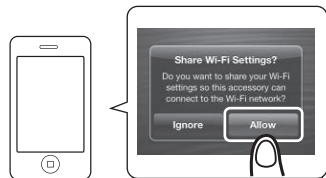
If you press **iPod**, connect iPod/iPhone to the iPod/iPhone dock. If you press **USB**, connect the iOS device to the USB terminal.

5 Press **NEW SETUP**.

The **NETWORK** indicator will flash blue.

6 Tap "Allow" on iPod/iPhone/iPad.

The Wi-Fi settings of your iPod/iPhone/iPad are applied to the unit.



When the connection is complete, the **NETWORK** indicator will briefly change to flashing blue, then light steadily white.

The **NETWORK** indicator will flash white when the signal is weak.

F: Wireless Direct

Important

- Wireless Direct should be used only as a temporary connection under conditions where a normal router cannot be used. This connection is not encoded, so the music stream and music metadata will not be encrypted.
- Wireless Direct is intended for use with smartphones in their originally manufactured condition that receive regular updates. If a smartphone has been modified (such as "jailbreaking" or "unlocking" a phone), its security is compromised, and the wireless connection could result in unauthorized access or other intrusion. Do not use a modified phone with Wireless Direct.

Note

- Only one wireless device can be connected at the same time.
- Wireless Direct doesn't have internet connection. When you are using Wireless Direct, you will not be able to use any kind of internet service.
- When power to this unit is turned OFF, the Wireless Direct function is canceled, and the unit returns to the network setting in effect prior to using the Wireless Direct function.

1 Confirm that the AC adapter and LAN cable are not connected to the unit.

2 Connect the AC adapter, and press **STANDBY/ON.**

Wait for about 30 to 40 seconds.

3 Confirm that "WAITING" is no longer displayed on the main display. Hold the NW SETUP depressed for 3 seconds.

The **NETWORK** indicator will light blue, and "W DIRECT" is shown on the main display; wait for about 10 to 20 seconds.

4 When the network indicator lights blue, connect to the network called "Wireless Direct N : xxxxxx" from Wi-Fi network setting on the computer, iPhone, tablet computer or other device.

N: 0 - 9 Values

The default value is 0.

Each time the Wireless Direct is executed after this, the value will change consecutively to 1, 2, 3, and so on.

Press and hold **NW SETUP** for 3 seconds. "W DIRECT" is shown on the main display.

The "xxxxxx" is the device's unique identifier number. Not all characters may be displayed, depending on the device used.

Consult the appropriate Operating Instructions for information regarding operation of the computer, iPhone, tablet computer or other device used.

This completes the connection.

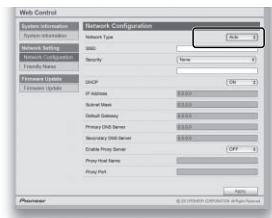
The **NETWORK** indicator remains lighted blue.

You may now operate your iPod/iPhone/iPad to perform AirPlay, etc.

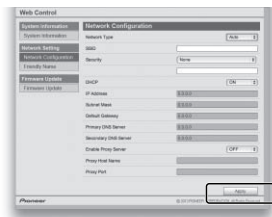
Network type setting

Network Type setting can be changed on the Network Configuration screen.

1 Select Network type, Auto/Wired.



2 Press "Apply" to change settings.



Note

- Auto: Recommended value. Both wireless and wired LAN functions will be effective. Use of wired or wireless LAN depends on whether a LAN cable is connected at the time the power is turned **ON**.
- Wired: Wireless LAN functions will be turned off, and only the wired LAN is effective.

Chapter 9:

Internet Radio

Installation of the Pioneer Control Application (ControlApp) is required in order to use all of the Internet Radio functions.

Consult the following website:

When using iPhone/iPod touch

http://pioneer.jp/support/soft/iapp_controlapp/en.html

When using Android

http://pioneer.jp/support/soft/aapp_controlapp/en.html

- For details, *Installing ControlApp* and *Using ControlApp* on page 31.

Listening to the Internet Radio

You can select and listen to your favorite Internet Radio station from the list of Internet Radio stations created, edited, and managed by the vTuner database service exclusively for use with the Pioneer products.

Connecting to a LAN network

Connect to the network using the LAN interface or WLAN antenna.

For details on the connections, See *Connecting to the network through the LAN interface or WLAN antenna* on page 11.

Playing music on Internet Radio

1 Connect this unit and your mobile device to a network.

The Internet Radio function cannot be used when using a wireless Direct connection.

2 Start ControlApp.

3 Tap the Internet Radio.

4 Tap the playback control.

Audio playback will begin.

Note

- When listening to music with Internet Radio, the following remote control buttons will be disabled: **▶/II** (play/pause), **◀◀** (prev), and **▶▶** (next)
- Buttons remaining enabled on this unit and its remote control include **Ⓞ** **STANDBY/ON**, **INPUT**, and **VOLUME -/+** (**VOLUME -/+**).
- If no play back and no operation has done for 20 minutes or more, the unit turns off automatically.
- Auto power off can be switched to **ON/OFF** (page 52).

Playing back your favorite songs

20 broadcast stations are already preset in Favorites. The broadcast stations registered as Favorites do not require the ControlApp to listen to, but can also be accessed from the supplied remote control.

1 Press the NETWORK on the remote control repeatedly to select Favorites.

2 Press the ENTER or the ▶/II on the remote control.

Playback will begin.

3 To select from broadcast stations registered under Favorite, use the ◀◀ (prev) and ▶▶ (next) or PRESET +/- to make your selection.

If, after selecting a broadcast station, you want to return to the previous station, press the ◀◀ or the **PRESET -** once and the product will retune back to the previous station. Press the ◀◀ or the **PRESET -** twice to go back to the station prior to that.

Note

- Favorites can only be added or deleted using the ControlApp.
- "Internet Radio" is radio programming distributed over the internet. Numerous Internet Radio stations exist around the world, ranging in size from small services run by individuals to large stations managed by commercial ground-based broadcasting companies. Ordinary ground-based broadcasting is limited to the range of the radio wave, but Internet Radio allows reception of radio programs from around the world, delivered through the Internet. On the other hand, depending on the status of the Internet connection, broadcast sounds may sometimes be interrupted or garbled.
 - A broadband connection is recommended when listening to Internet Radio. Use of a 56 K modem or ISDN connection may inhibit your ability to fully appreciate the potential of Internet Radio.
 - Computer port numbers for Internet Radio may differ, depending on the station, so it is recommended to check your firewall settings.
 - The provision of lists of broadcasting stations by vTuner may be discontinued without notification.
 - Broadcasting stations sometimes interrupt or discontinue broadcasts. In such cases, it may not be possible to receive broadcasts from a station, even though it is published on a list of available stations.
 - The list of Internet Radio stations provided with this unit is based on the radio station database service vTuner. This database service is edited and compiled for use with this unit.

- vTuner is an online contents service for Internet Radio. For more information about vTuner, consult the website at <http://www.vtuner.com>.
- This product is protected by certain intellectual property rights held by NEMS and BridgeCo. Use or distribution of such technology outside of this product is prohibited without a license from NEMS and BridgeCo or their authorized subsidiary.
- Accessing external contents requires a high-speed Internet connection, together with registration and contract with a commercial Internet provider. Services from third-person content providers may be changed, interrupted, or discontinued without notice, and Pioneer assumes no responsibility for any such issues. Pioneer makes no guarantees regarding the continuity or future availability of external content-providing services.

5 Tap the "Download".

When download is completed, the CONTROL screen will be displayed.



Installing ControlApp

The Pioneer application ControlApp must be installed on your mobile device. For more information about your operating environment, access the appropriate Website as noted below.

If using an iPhone or iPod touch

You can obtain from "App Store".

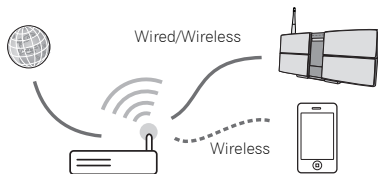
If using an Android device

You can obtain from "Google Play".

Using ControlApp

If using ControlApp for the first time, follow these procedures to start the application.

- 1 Connect this unit to the network you normally use.**
- 2 Connect your mobile device to the same network.**
Confirm that ControlApp is installed on your mobile device.
- 3 Turn on the power to this unit.**
- 4 Start ControlApp on your mobile device.**



Chapter 10:

Music server

Installation of the Pioneer Control Application (ControlApp) is required in order to use all of the Music server functions.

Consult the following website:

When using iPhone/iPod touch

http://pioneer.jp/support/soft/iapp_controlapp/en.html

When using Android

http://pioneer.jp/support/soft/aapp_controlapp/en.html

For details, *Installing ControlApp and Using ControlApp* on page 31.

This unit can play audio files stored on computers or other components on a Local Area Network (LAN).

Introduction

This unit allows you to listen to audio files on a computer or other component connected to the unit via LAN interface. This chapter describes the setup and playback procedures required to enjoy these features. It is advisory that you also refer to the operation manual supplied with your network component.

Note

- Photo or video files cannot be played back.

Playing music on Music server

1 Connect this unit and your mobile device to a network.

The Music server function cannot be used when using a wireless Direct connection.

2 Start ControlApp.

3 Tap the Music Server.

4 Tap the playback control.

Audio playback will begin.

Note

- When listening to music with Music server, the following remote control buttons will be disabled: ►/II (play/pause), ◀◀ (prev), and ▶▶ (next)
- Buttons remaining enabled on this unit and its remote control include **STANDBY/ON**, **INPUT**, and **VOLUME -/+ (VOLUME -/+)**.
- If no play back and no operation has done for 20 minutes or more, the unit turns off automatically.
- Auto power off can be switched to **ON/OFF** (page 52).

About playable DLNA network devices

This unit allows you to play music on media servers connected on an identical Local Area Network (LAN) as the unit. This unit allows you to play files stored on the following devices:

- PCs running Microsoft Windows Vista or XP Service Pack 3 with Windows Media Player 11 installed
- PCs running Microsoft Windows 7 with Windows Media Player 12 installed
- DLNA-compatible digital media servers (on computers or other components)

Files stored in a computer or DMS (Digital Media Server) as described above can be played via command from an external Digital Media Controller (DMC). Devices controlled by this DMC to play files are called DMRs (Digital Media Renderers). This unit supports this **DMR** function.

When this unit is selected as a DMR and DMS playback is begun, the unit's input automatically switches to **DMR**. When in the **DMR** mode, such operations as playing and stopping files can be performed from the external controller. Volume adjustment and the muting control are also possible.

Important

- You cannot access a computer on a network while you are logged onto a domain that is configured in a Windows network environment. Instead of logging onto the domain, log onto the local machine.
- There are cases where the time elapsed may not be correctly displayed.

Note

- Depending on the external controller being used, playback may be interrupted when the volume is adjusted from the controller. In this case, adjust the volume from the unit or remote control.

Chapter 11:

AirPlay

Using AirPlay on iPod touch, iPhone, iPad and iTunes

AirPlay works with iPhone, iPad, and iPod touch with iOS 4.3.3 or later, Mac with OS X Mountain Lion, and Mac and PC with iTunes 10.2.2 or later.

To use AirPlay, select your unit on your iPod touch, iPhone, iPad or in iTunes and start playback. For more information, see the Apple website (<http://www.apple.com>).

- Adjustment of the unit's volume from iPod touch, iPhone, iPad or iTunes.
- ►/|| (play/pause), ◀◀ (prev), and ▶▶ (next) track, and random/repeat from the remote control of the unit. The display will not show the Play Status, Repeat, or random icons.

Tip

- A network environment is required to use AirPlay.
- The unit's name that shows up in the AirPlay UI on iPod touch, iPhone, iPad and iTunes can be changed by **Friendly Name** from web browser.
- AirPlay provided on this unit has been developed and tested based on the software versions for the iPod touch, iPhone, iPad and the software versions for iTunes that are indicated on the Pioneer website. AirPlay may not be compatible with iPod touch, iPhone, iPad or iTunes software versions other than those indicated on the Pioneer website.

About the DHCP server function

To play back audio files stored on components on the network, you must turn on the DHCP server function of your router.

In case your router does not have the built-in DHCP server function, it is necessary to set up the network manually. Otherwise, you cannot play back audio files stored on components on the network or listen to Internet Radio stations. See *Connect to network* on page 24 for more on this.

Authorizing this unit

This unit must be authorized to enable playback. The unit is automatically authorized when it is connected to a computer over a network. If not, please authorize this unit manually on the computer. The authorization (or permission) method for access varies depending on the type of server currently being connected. For more information on authorizing this unit, refer to the instruction manual of your server.

Playing audio files stored on computers or other components

Connecting to the LAN network

Be sure to connect computer or other components to the network using the LAN interface before you use this function. For details on the connections, See *Connecting to the network through the LAN interface or WLAN antenna* on page 11.

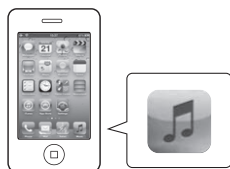
Using AirPlay to enjoy music

- 1 Confirm that the iPod touch, iPhone, iPad, iTunes and this unit are connected to the same wired or wireless network.
- 2 Play music on iPod touch, iPhone, iPad or iTunes.
- 3 During playback, tap the AirPlay icon (📶) displayed on the iPod touch, iPhone, iPad or iTunes.
- 4 Select this unit's name ("Friendly Name") from the available device list.

Operating AirPlay from an iPod/iPhone/iPad

1 Tap Music icon and start playing music.

Playback starts.



2 Tap AirPlay icon (📺).



3 Select X-SMC55.

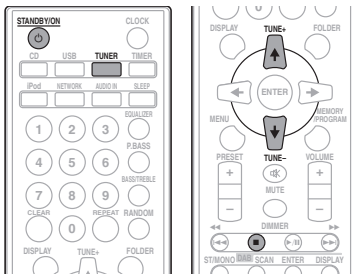


Chapter 12:

Using the tuner

Listening to the radio broadcasts

The following steps show you how to tune in to FM radio broadcasts using the automatic (search) and manual (step) tuning functions. Once you are tuned to a station you can memorize the frequency for recall later. See *Saving station presets* below for more on how to do this.



Tuning

- 1 Press the **STANDBY/ON** to turn the power on.
- 2 Press **TUNER** on the remote control or **INPUT** repeatedly on the main unit to select FM input.
- 3 Press **TUNE +/-** on the remote control to tune in to the desired station.

Automatic tuning:

Press and hold **TUNE +/-**, scanning will start automatically and the tuner will stop at the first receivable broadcast station.

Manual tuning:

Press the **TUNE +/-** repeatedly to tune in to the desired station.

Note

- When radio interference occurs, automatic tuning may stop automatically at that point.
- Automatic tuning will skip weak signal stations.
- To stop the automatic tuning, press **■**.

To receive an FM stereo transmission:

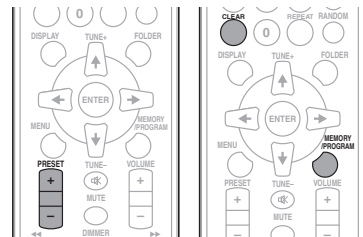
- Press **ST/MONO** to select stereo mode and "AUTO" will be displayed.

Improving poor FM reception:

- 1 Press **ST/MONO** repeatedly to select **MONO**. This will change the tuner from stereo to mono and usually improve the reception.

Saving station presets

If you often listen to a particular radio station, it's convenient to have the unit store the frequency for easy recall whenever you want to listen to that station (Preset tuning). This saves the effort of manually tuning in each time. This unit can memorize up to 30 stations.



- 1 Tune to a station you want to memorize. See *Tuning* for more on this.
- 2 Press **MEMORY/PROGRAM**. The preset number will flash.
- 3 Press **PRESET +/-** to select the preset channel number.
- 4 Press **MEMORY/PROGRAM** to store that station in memory.

If the preset number has changed from flashing to lighting, before the station is memorized, repeat the operation from step 2.

- Repeat steps 1 to 4 to set other stations, or to change a preset station. When a new station is stored in the memory, the station previously memorized for that preset channel number will be erased.

Note

- The backup function protects the memorized stations for a few hours should there be a power failure or the AC power cord become disconnected.

To recall a memorized station

- 1 Press PRESET +/- to select the desired station.

To scan the preset stations

The stations saved in the memory can be scanned automatically. (Preset memory scan)

- 1 Press and hold PRESET +/-.

The preset number will appear and the programmed stations will be tuned in sequentially, for 5 seconds each.

- 2 Press PRESET +/- again when the desired station is located.

To erase entire preset memory

- 1 Press TUNER on the remote control.
- 2 Press CLEAR until "MEM CLR" appears.

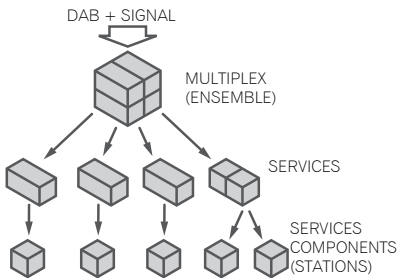
Note

- All stations will be erased.

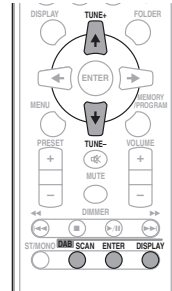
Listening to the DAB+

About DAB+ (Digital Audio Broadcasting)

Digital Audio Broadcasting is a digital transmission system where audio signals are converted to digital signals for broadcasting. DAB+ is broadcast as a group of data called multiplex (ensemble) which may contain one or more stations (services). Each station contains a primary service and there may be one or more secondary services. This allows several programmes or services to be transmitted on a single frequency.



Auto Scan



When turned on for the first time, the unit scans radio stations automatically to create a station list. You can make the auto scan again when you move the unit to other areas or add multiplex channels to the station list.

- 1 Press TUNER on the remote control or INPUT repeatedly on the main unit to select DAB input.

- 2 Press DAB SCAN on the remote control for more than 3 seconds.

Auto Scan scanning begins.

After the scan:

The stations will be stored in alphanumeric order and the first station on the list will be selected and you will hear it through the speakers.

- To listen to other stations, see *Selecting a station in the station list* below.

Note

- If no station is found, "NO SIG" appears.
- Up to 100 appears for total received stations.

Selecting a station in the station list

Once a DAB+ station is received, you can select stations in the station list.

- 1 Press the TUNER until "DAB" appears on the display.

- 2 Whilst receiving a DAB+ station, press the TUNE +/- to select the desired station.

- 3 Within 10 seconds, press the DAB ENTER on the remote control to tune into the desired station.

Manual tune

You can manually store stations which Auto Scan cannot find. If reception is poor, you can adjust the sensitivity. Manual tune is only available after Auto tune. Perform Auto Scan first.

- 1 Press the TUNER until "DAB" appears on the display.
- 2 Press the DAB SCAN once.
- 3 Within 10 seconds, press the TUNE +/- to select the DAB+ frequency.
- 4 Within 10 seconds, press the DAB ENTER.
 - If the level is too low, move the aerial or unit to improve reception.

Changing the information display

You can switch DAB+ display information.

Press the **DAB DISPLAY** button.

Each time the button is pressed, the information display changes in the following order.

When "NO SIG" appears, the **DAB DISPLAY** button does not allow you to change the display.

[Station Name]

Station name is displayed. (set by default)

[Scrolling text]

Information scrolls across the display when sent from the station.

[Programme type]

A description of the type of content being broadcast by the station.

[Multiplex name]

The name of the multiplex (ensemble) which provides the current service.

[Frequency]

The DAB+ frequency for the station.

[Stereo mode]

Display stereo mode.

[Transfer speed]

The data transfer speed.

[Signal quality]

The signal quality is displayed as a number (0 - 100).

[85-100: Good, 70-84: Fair, 0-69: Poor]

Memorising a station

You can store 10 DAB stations in memory and recall them at the push of a button. (Preset tuning)

- 1 Tune to the desired DAB station.
 - 2 Press the MEMORY/PROGRAM.
- The preset number will flash.

3 Within 10 seconds, press the PRESET +/- to select the preset channel number.

Store the stations in memory, in order, starting with preset channel 1.

4 Within 10 seconds, press the MEMORY/PROGRAM to store that station in memory.

If the preset number indicators disappear before the station is memorised, repeat the operation from step 2.

5 Repeat steps 1 - 4 to set other stations, or to change a preset station.

When a new station is stored in the memory, the station previously memorised for that preset channel number will be erased.

DAB Frequency table (BAND III)

Frequency	Label	Frequency	Label
174.928 MHz	5A	208.064 MHz	9D
176.640 MHz	5B	209.936 MHz	10A
178.352 MHz	5C	211.648 MHz	10B
180.064 MHz	5D	213.360 MHz	10C
181.936 MHz	6A	215.072 MHz	10D
183.648 MHz	6B	216.928 MHz	11A
185.360 MHz	6C	218.640 MHz	11B
187.072 MHz	6D	220.352 MHz	11C
188.928 MHz	7A	222.064 MHz	11D
190.640 MHz	7B	223.936 MHz	12A
192.352 MHz	7C	225.648 MHz	12B
194.064 MHz	7D	227.360 MHz	12C
195.936 MHz	8A	229.072 MHz	12D
197.648 MHz	8B	230.784 MHz	13A
199.360 MHz	8C	232.496 MHz	13B
201.072 MHz	8D	234.208 MHz	13C
202.928 MHz	9A	235.776 MHz	13D
204.640 MHz	9B	237.488 MHz	13E
206.352 MHz	9C	239.200 MHz	13F

Note

- Label is not displayed on the main display. Will displayed only frequency.

Chapter 13:

Other connections

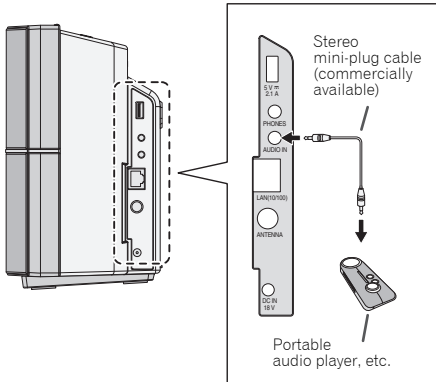
⚠ CAUTION

- Before making or changing the connections, switch off the power and disconnect the power cord from the AC outlet.

Connecting auxiliary components

Connect the side panel **AUDIO IN** mini-plug jack to your auxiliary playback component.

- This method can be used to play music on this unit from iPod/iPhone/iPad that do not support use of an iPod/iPhone Dock and USB terminal (Side).



1 Press **AUDIO IN** on the remote control or **INPUT** repeatedly on the main unit to select **AUDIO IN**.

When **INPUT** is selected "**AUDIO IN**" will be displayed on the main display.

Note

- If the **AUDIO IN** mini-plug jack is connected to auxiliary phones jack, the volume of the unit will be adjusted by the volume on the playback component. If the sound is distorted after you lower the volume of the unit, try lowering the volume on the auxiliary playback component.

Chapter 14:

Additional information

Troubleshooting

Incorrect operations are often mistaken for trouble and malfunctions. If you think that there is something wrong with this component, check the points below. Sometimes the trouble may lie in another component. Investigate the other components and electrical appliances being used. If the trouble cannot be rectified even after exercising the checks listed below, ask your nearest Pioneer authorized service center or your dealer to carry out repair work.

- If the unit does not operate normally due to external effects such as static electricity disconnect the power plug from the outlet and insert again to return to normal operating conditions.

General problem

Problem	Check	Remedy
Settings you have made have been cleared.	Was the power cord unplugged?	When power cord is unplugged, the settings you have made is cleared. Please set the clock again. If you do not want to clear the settings, do not unplug the power cord.
Difference in volume between CDs, MP3, WMA, iPod/iPhone/iPad, Tuner and AUDIO IN .	This is not a problem with this unit.	The volume may sound differently depending on the input source and recording format.
This unit cannot be operated with the remote control.	Are you operating from far away?	Operate within 7 m, 30° of the remote sensor on the front panel (page 8).
	Is the remote control sensor exposed to direct sunlight or strong artificial light from a fluorescent bulb, etc.?	The remote control signals may not be received properly if the remote control sensor is exposed to direct sunlight or strong artificial light from a fluorescent bulb, etc.
	Are the batteries dead?	Replace the batteries (page 6).
Disc cannot be played.	Is the disc scratched?	Scratched discs may not play.
	Is the disc dirty?	Wipe the dirt off the disc (page 48).
	Is the disc properly slotted?	Slot a disc with the label side facing front (page 19).
	Is this unit placed in a humid location?	There could be condensation inside. Wait a while for the condensation to evaporate. Do not place this unit near an air-conditioner, etc. (page 48).
Sound skips when the disc is played back.	Is the playback volume too loud?	If the sound skips when played back at a loud volume, reduce the playback volume (page 14).
Folder or file names are not recognized.	Have you exceeded the maximum number of folder or file names this unit can recognize?	Up to 255 folders can be recognized on one disc. Up to 999 files can be recognized within one folder. Depending on the folder structure, however, this unit may not be able to recognize certain folders or files.
The unit turns off automatically.		If no play back and no operation has done for 20 minutes or more, the unit turns off automatically. Auto power off can be switched to ON/OFF (page 52).

When a USB storage device is connected

Problem	Check	Remedy
USB storage device is not recognized.	Is the USB storage device properly connected?	Connect the device securely (all the way in).
	Is the USB storage device connected via a USB hub?	This unit does not support USB hubs. Connect the USB storage device directly.
	Is the USB storage device supported by this unit?	This unit only supports USB mass storage class devices.
		This unit supports portable flash memory and digital audio playback devices.
		Only the FAT16 and FAT32 file systems are supported. Other file systems (exFAT, NTFS, HFS etc.) are not supported.
	USB flash drive that supports USB 2.0 can be used.	
	This device does not support the use of external hard disc drives.	
	This is not a problem with this unit.	Turn the power off then back on. Some USB storage devices may not be recognized properly.
File cannot be played.	Is the file copyright-protected (by DRM)?	Copyright-protected files cannot be played.
	This is not a problem with this unit.	Files stored on a computer cannot be played. It may not be possible to play some files.
Folder or file names are not displayed or are not properly displayed.	Do the folder or file names contain more than 30 characters?	The maximum number of characters displayable for the folder and file names is 30.
Folder or file names are not displayed in alphabetical order.	This is not a problem with this unit.	The order in which the folder and file names are displayed depends on the order in which the folders or files were recorded on the USB storage device.
Much time is required to recognize the USB storage device.	What is the USB storage devices capacity?	Some time may be required to load the data when large capacity USB storage devices are connected (this could take several minutes).
Power is not supplied to the USB storage device.	Is AUTH ERR displayed on the front panel display? No power is supplied if the power consumption is too high.	Turn the power off then back on.
		Turn the power off, then disconnect and reconnect the USB storage device. Press INPUT to switch to the other mode, then switch again to the USB mode.

When an iPod/iPhone/iPad is connected

Problem	Remedy
Can't operate the iPod/iPhone/iPad by the remote control.	Make sure the iPod/iPhone/iPad is connected correctly (refer to <i>Connecting your iPod/iPhone</i> on page 17).
Can't operate the iPod/iPhone/iPad.	Make sure the iPod/iPhone/iPad is connected correctly (refer to <i>Connecting your iPod/iPhone</i> on page 17). If the iPod/iPhone/iPad is experiencing a hangup, try resetting the iPod/iPhone/iPad, and reconnect it to the unit.

Network

Problem	Check	Remedy
Cannot access to the network.	The LAN cable is not firmly connected.	Firmly connect the LAN cable (page 12).
	The router is not switched on.	Switch on the router.
	Is the network type correctly set up?	If set to Auto, the network connection is switched to wired or wireless depending on whether the unit is connected to a LAN cable when the power is turned ON .
Cannot access to the component or computer connected via network.	Internet security software is currently installed in the connected component.	There are cases where a component with Internet security software installed cannot be accessed.
	The audio component on the network which has been switched off is switched on.	Switch on the audio component on the network before switching on this unit.
	The component connected to the network is not properly set.	If the client is automatically authorized, you need to enter the corresponding information again. Check whether the connection status is set to "Do not authorize".
	There are no playable audio files on the component connected to the network.	Check the audio files stored on the component connected to the network.
Playback does not start.	The component is currently disconnected from this unit or the power supply.	Check whether the component is properly connected to this unit or the power supply.
The computer or Internet Radio is not properly operated.	The corresponding IP address is not properly set.	Switch on the built-in DHCP server function of your router, or set up the network manually according to your network environment (page 24).
	The IP address is being automatically configured.	The automatic configuration process takes time. Please wait.
The audio files stored on components on the network, such as a computer, cannot be played back.	Windows Media Player 11 or Windows Media Player 12 is not currently installed on your PC.	Install Windows Media Player 11 or Windows Media Player 12 on your PC (page 32).
	Audio files were recorded in formats other than MP3, WAV (LPCM only), MPEG-4 AAC, FLAC, WMA, AIFF, and ALAC.	Play back audio files recorded in MP3, WAV (LPCM only), MPEG-4 AAC, FLAC, WMA, AIFF, or ALAC. Note that some audio files recorded in these formats may not be played back on this unit.
	Audio files recorded in MPEG-4 AAC or FLAC are being played back on Windows Media Player 11 or Windows Media Player 12.	Audio files recorded in MPEG-4 AAC or FLAC cannot be played back on Windows Media Player 11 or Windows Media Player 12. Try using another server. Refer to the operation manual supplied with your server.
	The component connected to the network is not properly operated.	Check whether the component is affected by special circumstances or is in the sleep mode. Try rebooting the component if necessary.
	The component connected to the network does not permit file sharing.	Try changing the settings for the component connected to the network.
	The folder stored on the component connected to the network has been deleted or damaged.	Check the folder stored on the component connected to the network.
	Network connections could be restricted due to the computer's network settings, security settings, etc.	Check the computer's network settings, security settings, etc.

Problem	Check	Remedy
Cannot access Windows Media Player 11 or Windows Media Player 12.	In case of Windows Media Player 11: You are currently logged onto the domain through your PC with Windows XP or Windows Vista installed. In case of Windows Media Player 12: You are currently logged onto the domain through your PC with Windows 7 installed.	Instead of logging onto the domain, log onto the local machine.
Audio playback is undesirably stopped or disturbed.	The audio file currently being played back was not recorded in a format playable on this unit.	Check whether the audio file was recorded in a format supported by this unit. Check whether the folder has been damaged or corrupted. Even audio files listed as playable on this unit may sometimes not be played back or displayed (page 50).
	The LAN cable is currently disconnected.	Connect the LAN cable properly (page 11).
	There is heavy traffic on the network with the Internet being accessed on the same network.	Use 100BASE-TX to access the components on the network.
	When in the DMR mode, depending on the external controller being used, playback may be interrupted when a volume operation is performed from the controller.	In this case, adjust the volume from the unit or remote control.
	There is a connection routed through a wireless LAN on the same network.	There may be a shortage of bandwidth on the 2.4 GHz band used by the wireless LAN. Make wired LAN connections not routed through a wireless LAN. Install away from any devices emitting electromagnetic waves on the 2.4 GHz band (microwave ovens, game consoles, etc.). If this does not solve the problem, stop using other devices that emit electromagnetic waves.
Cannot listen to Internet Radio stations.	The firewall settings for components on the network are currently in operation.	Check the firewall settings for components on the network.
	You are currently disconnected from the Internet.	Check the connection settings for components on the network, and consult with your network service provider if necessary (page 11).
	The broadcasts from an Internet Radio station are stopped or interrupted.	Some Internet Radio stations on the list of Internet Radio stations for this unit (page 49) may occasionally not be available for listening.

Wireless LAN

Problem	Check	Remedy
Network cannot be accessed via wireless LAN.	Is the LAN cable connected to the unit?	Be sure the LAN cable is not connected to the unit, and then the unit OFF and ON again.
	Is the Network type set to Wired?	In the Network configuration screen in the Web browser, set Network type to Auto.
	This unit and base unit (wireless LAN router, etc.) are too far apart or there is an obstacle between them.	Improve the wireless LAN environment by moving the unit and base unit closer together, etc.
	There is a microwave oven or other device generating electromagnetic waves near the wireless LAN environment.	Use the system in a place away from microwave ovens or others device generating electromagnetic waves. Avoid using devices generating electromagnetic waves as much as possible when using the system with the wireless LAN.
	Multiple wireless devices are connected to the wireless LAN router.	When connecting multiple wireless devices, their IP addresses must be changed.
	Wireless LAN connections cannot be established between the unit and base unit (wireless LAN router, etc.).	The unit must be set in order to establish wireless LAN connections. See <i>Connecting using wireless LAN</i> on page 12.
	The IP address settings of the unit does not match the settings of the wireless LAN router, etc.	Check the IP address settings of the unit (including the DHCP setting). If the unit's DHCP setting is on, turn the unit's power off, then turn the power back on. Check that the IP address of the unit matches the settings of the wireless LAN router, etc. If the unit's DHCP setting is off, set an IP address matching the network of the base unit (wireless LAN router, etc.). For example, if the wireless LAN router's IP address is "192.168.1.1", set the unit's IP address to "192.168.1.XXX" (*1), the subnet mask to "255.255.255.0", the gateway and DNS to "192.168.1.1". (*1) Set the "XXX" in "192.168.1.XXX" to a number between 2 and 248 that is not assigned to other devices.
The access point is set to conceal the SSID.	In this case, the SSID may not be displayed on the access point list screen. If not, set the SSID, etc., by making the wireless LAN settings on the unit manually.	
The access point's security settings use WEP 152-bit length code key or shared key authentication.	The unit does not support WEP 152-bit length code key or shared key authentication.	
Doesn't play properly when using the Wireless Direct function.	The Wireless Direct function may not operate properly depending on the condition of signal reception and the wireless LAN device connected. In such cases, bring the wireless devices closer together and in other ways improve the conditions for wireless LAN reception.	
Set to quick start mode, but during standby AirPlay and DMR do not work.	Are you using Connecting to a router without WPS-PBC function or Wireless Direct?	If you turn the power OFF immediately after using Connecting to a router without WPS-PBC function or Wireless Direct, quick start mode will be temporarily turned OFF . Once the power is turned ON again, the quick start mode settings will be restored.
	Have you removed the power cord?	If you remove and then reinsert the power cord, quick start mode will be temporarily turned OFF . Once the power is turned ON again, the quick start mode settings will be restored.
After turning on the power, the NETWORK indicator flashes blue.	If you removed the power cord while connecting to a router with WPS-PBC function, the settings may remain in effect when the power is next tuned back on. Turn the power OFF , and then turn it back ON again.	

Firmware update

You can update this unit's firmware via Web Control menu. Download the latest firmware at Pioneer website.

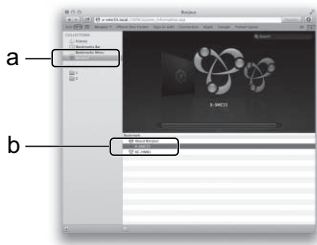
1 Display the Web Control menu.

Choose the access method appropriate for your device.

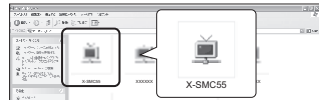
Using Safari to access Web Control

- 1) Start the Safari browser on your computer.
- 2) Click on the bookmark icon (🔖) at the upper left of the screen.
- 3) Click on Bonjour list (a), and select this unit's friendly name (b).

It is necessary to previously set Safari to display Bonjour.



- 3) Double-click on this unit's icon. You should now be able to access the Web Control menu.



2 Click "Firmware Update".



3 Press "Start".

The firmware update prepare screen is displayed. If the screen does not switch automatically, click **Click here**.



Using UPnP function to access Web Control (after connecting to the network)

This unit supports UPnP. You can access the Web Control menu from a UPnP-supported device connected to the same network as this unit. For details, consult your computer's operating instructions.

- Using Microsoft Windows 7/Vista

- 1) Click on "Start" → "Documents" → "My Documents".
- 2) From the Explorer menu on the left side of the screen, select "Network".

This unit will appear as an icon connected to the same network.

- 3) Right-click on this unit's icon and select "View device webpage".

You should now be able to access the Web Control menu.



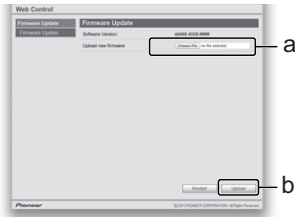
- Using Windows XP

- 1) Click on "Start" → "My Network".
- 2) Click on "Display icons for UPnP devices connected to the network".

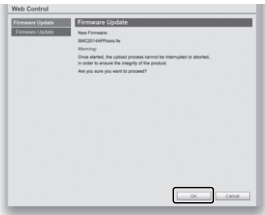
This unit will appear as an icon connected to the same network.

4 Browse the latest firmware on your computer (a) and then press "Upload" (b).

The confirmation screen is displayed. If you continue the firmware update, press **Yes**. Once the firmware update process starts, you can't stop it. Wait until the file is uploaded (about one minute may be required depending on your LAN connection environment).



5 The firmware upload status screen is displayed. Press "OK".



"The upload process finished successfully." will be shown when the update is completed. Unplug the the power cord from the AC outlet after the update is completed.

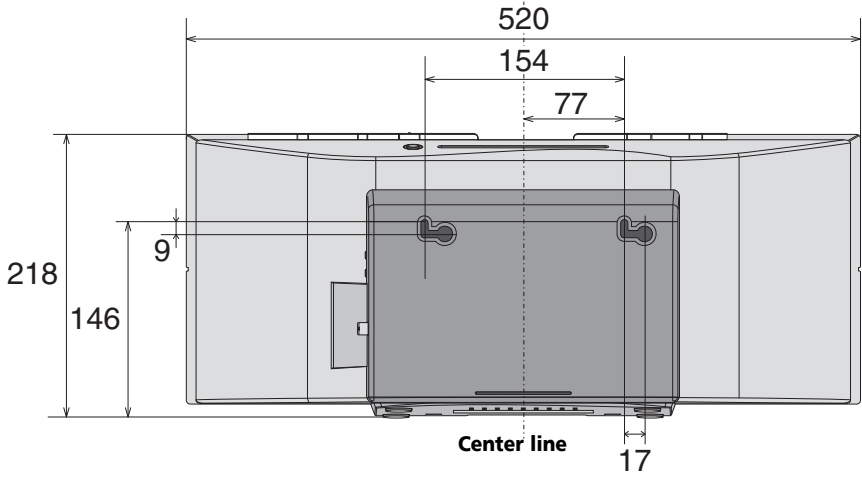


Note

- This setting for the network has been confirmed for Mac OS X 10.7 and Safari 5.1.

Dimensions (Rear)

Unit : mm



Playable discs and formats

Audio CD	<ul style="list-style-type: none"> • Commercially available audio CDs • CD-R/ -RW/ -ROM discs containing music recorded in the CD-DA format
WMA	WMA files recorded on CD-R/ -RW/ -ROM discs or USB storage devices
MP3	MP3 files recorded on CD-R/ -RW/ -ROM discs or USB storage devices

- **Only the discs that have been finalized can be played.**
- Discs recorded in packet write mode (UDF format) are not compatible with this unit.
- Corporation and product names mentioned herein are trademarks or registered trademarks of the respective corporations.
- Only discs recorded in ISO9660 Level 1, Level 2 and Joliet can be played.
- Files protected by DRM (Digital Rights Management) cannot be played.

 **Note**

- This unit does not support multisession discs or multiborder recording.
- Multisession/multiborder recording is a method in which data is recorded on a single disc in two or more sessions/borders. A "session" or "border" is one recording unit, consisting of a complete set of data from lead-in to lead-out.

Regarding copy protected CDs

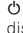
This unit is designed to conform to the specifications of the audio CD format. This unit does not support the playback or function of discs that do not conform to these specifications.

Supported audio file formats

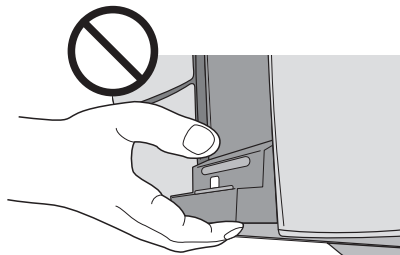
- This unit does not support lossless encoding.

Cautions on use

When moving this unit

When moving the unit, be sure to first check that there is no disc loaded and disconnect the iPod/iPhone/iPad. Then press  **STANDBY/ON**, wait for "**STAND BY**" disappears on main display to turn off, then unplug the power cord. Damage may occur if the unit is transported or moved with a disc inserted, or when another device is connected to the iPod/iPhone dock, **USB** terminal, or **AUDIO IN** mini-plug jack.

Do not use the dock to move this unit



Place of installation

- Choose a stable place near the TV or stereo system being used with this unit.
- Do not place this unit on top of a TV or color monitor. Also install it away from cassette decks and other devices easily affected by magnetic forces.

Avoid the following locations:

- Places exposed to direct sunlight
- Humid or poorly ventilated places
- Extremely hot places
- Places exposed to vibrations
- Places in which there is much dust or cigarette smoke
- Places exposed to soot, steam or heat (kitchens, etc.)

Do not place objects on this unit

Do not place any objects on top of this unit.

Do not obstruct the ventilation holes.

Do not use this unit on shaggy rugs, beds, sofas, etc., or wrapped in cloth, etc. Doing so will prevent the heat from dispersing, leading to damage.

Do not expose to heat.

Do not place this unit on top of an amplifier or other component that generates heat. When rack mounting it, to avoid the heat given off by the amplifier or other audio component, place it on a shelf below the amplifier.

- Turn off the unit's power when not using it.
- Depending on signal conditions, striped patterns may appear on a TV screen and noise may enter the sound of radio broadcasts when the unit's power is on. If this happens, turn the unit's power off.

About condensation

If this unit is moved suddenly from a cold place into a warm room (in winter, for example) or if the temperature in the room in which this unit is installed rises suddenly due to heater operation, etc., water droplets (condensation) may form inside (on operating parts and the lens). When condensation is present, this unit will not operate properly and playback is not possible. Let this unit stand at room temperature for 1 or 2 hours with the power turned on (the time depends on the extent of condensation). The water droplets will dissipate and playback will become possible. Condensation can also occur in the summer if this unit is directly exposed to the air flow from an air-conditioner. If this happens, move this unit to a different place.

Cleaning the product

- Unplug the power cord from the power outlet when cleaning this unit.
- Clean this unit using a soft cloth. For tough dirt, apply some neutral detergent diluted in 5 to 6 parts water to a soft cloth, wring out thoroughly, wipe off the dirt, then wipe again with a soft, dry cloth.
- Alcohol, thinner, benzene, insecticides, etc., could cause the print or paint to peel off. Also, leaving rubber or vinyl products in contact with this unit for long periods of time could mar the cabinet.
- When using chemical-impregnated wipes, etc., read the cautions included with the wipes carefully.

Cleaning the lens

- This unit's lens should not become dirty in normal use, but if for some reason it should malfunction due to dust or dirt, consult your nearest Pioneer authorized service center. Although lens cleaners for players are commercially available, we advise against using them since some may damage the lens.

Handling discs**Storing**

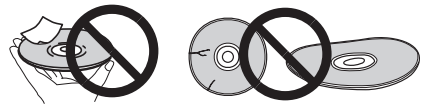
- Always place discs in their cases and store them vertically, avoiding hot, humid places, places exposed to direct sunlight and extremely cold places.
- Be sure to read the cautions included with the disc.

Cleaning discs

- Discs may not play if there are fingerprints or dust on them. In this case, use a cleaning cloth, etc., to gently wipe the disc from the inside towards the outside. Do not use dirty cleaning cloths.



- Do not use benzene, thinner or other volatile chemicals. Also do not use record spray or antistatic agents.
- For tough dirt, apply some water to a soft cloth, wring out thoroughly, wipe off the dirt, then wipe off the moisture with a dry cloth.
- Do not use damaged (cracked or warped) discs.
- Do not let the signal surface of discs get scratched or dirty.
- Do not attach pieces of paper or stickers to discs. Doing so could warp discs, making it impossible to play them. Also note that rental discs often have labels attached to them, and the label's glue may have oozed out. Check that there is no glue around the edges of such labels before using rented discs.

**About specially shaped discs**

Specially shaped discs (heart-shaped, hexagonal, etc.) cannot be played on this unit. Do not attempt to play such discs, as they could damage this unit.



About network playback

The network playback function such as Internet Radio or Music Server of this unit uses the following technologies:

Windows Media Player

See Windows Media Player 11/Windows Media Player 12 on page 32 for more on this.

DLNA



DLNA CERTIFIED® Audio Player

The Digital Living Network Alliance (DLNA) is a cross-industry organization of consumer electronics, computing industry and mobile device companies. Digital Living provides consumers with easy sharing of digital media through a wired or wireless network in the home.

The DLNA certification logo makes it easy to find products that comply with the DLNA Interoperability Guidelines. This unit complies with DLNA Interoperability Guidelines v1.5.

When a computer running DLNA server software or other DLNA compatible device is connected to this player, some setting changes of software or other devices may be required. Please refer to the operating instructions for the software or device for more information.

DLNA®, the DLNA Logo and DLNA CERTIFIED® are trademarks, service marks, or certification marks of the Digital Living Network Alliance.

Content playable over a network

- Even when encoded in a compatible format, some files may not play correctly.
- Movie or Photo files cannot be played back.
- There are cases where you cannot listen to an Internet Radio station even if the station can be selected from a list of radio stations.
- Some functions may not be supported depending on the server type or version used.
- Supported file formats vary by server. As such, files not supported by your server are not displayed on this unit. For more information check with the manufacturer of your server.

Disclaimer for Third Party Content

Access to content provided by third parties requires a high speed internet connection and may also require account registration and a paid subscription.

Third party content services may be changed, suspended, interrupted, or discontinued at any time without notice, and Pioneer disclaims any liability in connection with such occurrences.

Pioneer does not represent or warrant that content services will continue to be provided or available for a particular period of time, and any such warranty, express or implied, is disclaimed.

About playback behavior over a network

- Playback may stall when the computer is switched off or any media files stored on it are deleted while playing content.
- If there are problems within the network environment (heavy network traffic, etc.) content may not be displayed or played properly (playback may be interrupted or stalled). For best performance, a 100BASE-TX connection between player and computer is recommended.
- If several clients are playing simultaneously, as the case may be, playback is interrupted or stalled.
- Depending on the security software installed on a connected computer and the setting of such software, network connection may be blocked.

Pioneer is not responsible for any malfunction of the player and/or the Music Server features due to communication error/malfunctions associated with your network connection and/or your computer, or other connected equipment. Please contact your computer manufacturer or Internet service provider.

Windows Media is either a registered trademark or trademark of Microsoft Corporation in the United States and/or other countries.

This product includes technology owned by Microsoft Corporation and cannot be used or distributed without a license from Microsoft Licensing, Inc.

Microsoft®, Windows®7, Windows Vista®, Windows®XP, Windows®2000, Windows®Millennium Edition, Windows®98, and WindowsNT® are either registered trademarks or trademarks of Microsoft Corporation in the United States and/or other countries.

Authorizing this unit

In order to be able to play with Music Server, this unit must be authorized. This happens automatically when the unit makes a connection over the network to the computer. If not, please authorize this unit manually on the computer.

The authorization (or permission) method for access varies depending on the type of server currently being connected. For more information on authorizing this unit, refer to the instruction manual of your server.

aacPlus



The AAC decoder uses aacPlus developed by Coding Technologies
(www.codingtechnologies.com).

FLAC

FLAC Decoder

Copyright © 2000, 2001, 2002, 2003, 2004, 2005, 2006, 2007
Josh Coalson

Redistribution and use in source and binary forms, with or without modification, are permitted provided that the following conditions are met:

- Redistributions of source code must retain the above copyright notice, this list of conditions and the following disclaimer.
- Redistributions in binary form must reproduce the above copyright notice, this list of conditions and the following disclaimer in the documentation and/or other materials provided with the distribution.
- Neither the name of the Xiph.org Foundation nor the names of its contributors may be used to endorse or promote products derived from this software without specific prior written permission.

THIS SOFTWARE IS PROVIDED BY THE COPYRIGHT HOLDERS AND CONTRIBUTORS "AS IS" AND ANY EXPRESS OR IMPLIED WARRANTIES, INCLUDING, BUT NOT LIMITED TO, THE IMPLIED WARRANTIES OF MERCHANTABILITY AND FITNESS FOR A PARTICULAR PURPOSE ARE DISCLAIMED. IN NO EVENT SHALL THE FOUNDATION OR CONTRIBUTORS BE LIABLE FOR ANY DIRECT, INDIRECT, INCIDENTAL, SPECIAL, EXEMPLARY, OR CONSEQUENTIAL DAMAGES (INCLUDING, BUT NOT LIMITED TO, PROCUREMENT OF SUBSTITUTE GOODS OR SERVICES; LOSS OF USE, DATA, OR PROFITS; OR BUSINESS INTERRUPTION) HOWEVER CAUSED AND ON ANY THEORY OF LIABILITY, WHETHER IN CONTRACT, STRICT LIABILITY, OR TORT (INCLUDING NEGLIGENCE OR OTHERWISE) ARISING IN ANY WAY OUT OF THE USE OF THIS SOFTWARE, EVEN IF ADVISED OF THE POSSIBILITY OF SUCH DAMAGE.

Supported audio file formats

This unit supports the following file formats. Note that some file formats are not available for playback although they are listed as playable file formats. Also, the compatibility of file formats varies depending on the type of server. Check with your server to ensure the compatibility of file formats supported by your server.

- If an attempt is made to play files with unsupported formats, the sound may be intermittent or be accompanied by noise. In such cases, confirm that the file format is compatible with this unit.
- Internet Radio playback may be affected by the Internet communications environment, and in this case playback may not be possible even with the file formats listed here.
- For WAV, FLAC, AIFF and Apple Lossless files, if music files with the same format, sampling frequency, quantization bitrate and channel are queued up sequentially, gapless playback will be possible.
 - If the format has been changed on the server (transcode), gapless playback will not be possible.
 - Gapless playback is not possible in DMR mode.

USB / NETWORK

Category	Extension	Stream		
MP3 <*1>	.mp3	MPEG-1/ 2 Audio Layer-3	Sampling frequency	8 kHz to 48 kHz (USB) 32 kHz to 48 kHz (NETWORK)
			Quantization bitrate	16 bit
			Channel	2 ch
			Bitrate	8 kbps to 320 kbps
			VBR/CBR	Supported/ Supported
			Sampling frequency	8 kHz to 48 kHz (USB) 32 kHz to 48 kHz (NETWORK)
WMA	.wma	WMA 2/7/8/9 <*2>	Quantization bitrate	16 bit
			Channel	2 ch
			Bitrate	5 kbps to 320 kbps
			VBR/CBR	Supported/ Supported

*1 "MPEG Layer-3 audio decoding technology licensed from Fraunhofer IIS and Thomson multimedia."

*2 Files encoded using Windows Media Codec 9 may be playable but some parts of the specification are not supported; specifically, Pro, Lossless, Voice.

NETWORK only

Category	Extension	Stream		
WAV	.wav	LPCM	Sampling frequency	32 kHz to 48 kHz
			Quantization bitrate	16 bit, 24 bit
			Channel	2 ch
AAC	.m4a .aac .3gp .3g2	MPEG-4 AAC MPEG-4 HE AAC (AAC Plus v1/2)	Sampling frequency	32 kHz to 48 kHz
			Quantization bitrate	16 bit
			Channel	2 ch
			Bitrate	16 kbps to 320 kbps
			VBR/CBR	Supported/Supported
FLAC <*1>	.flac	FLAC	Sampling frequency	32 kHz to 48 kHz
			Quantization bitrate	16 bit, 24 bit
			Channel	2 ch
Apple Lossless	.m4a .mp4	Apple Lossless	Sampling frequency	32 kHz to 48 kHz
			Quantization bitrate	16 bit, 24 bit
			Channel	2 ch
AIFF	.aiff .aif	LPCM	Sampling frequency	32 kHz to 48 kHz
			Quantization bitrate	16 bit, 24 bit
			Channel	2 ch

*1 Uncompressed FLAC files are not supported. Pioneer does not guarantee playback.

About iPod/iPhone/iPad



AirPlay works with iPhone, iPad, and iPod touch with iOS 4, 3.3 or later, Mac with OS X Mountain Lion, and Mac and PC with iTunes 10.2.2 or later.

The Lightning connector works with iPhone 5, iPod touch (5th generation), and iPod nano (7th generation).

USB works with iPhone 5, iPhone 4S, iPhone 4, iPhone 3GS, iPhone 3G, iPhone, iPad (3rd and 4th generation), iPad 2, iPad mini, iPod touch (1st through 5th generation) and iPod nano (3rd through 7th generation).

"Made for iPod," "Made for iPhone," and "Made for iPad" mean that an electronic accessory has been designed to connect specifically to iPod, iPhone, or iPad, respectively, and has been certified by the developer to meet Apple performance standards. Apple is not responsible for the operation of this device or its compliance with safety and regulatory standards. Please note that the use of this accessory with iPod, iPhone, or iPad may affect wireless performance.

Apple, AirPlay, iPad, iPhone, iPod, iPod nano and iPod touch, iTunes, Safari, Bonjour and Mac are trademarks of Apple Inc., registered in the U.S. and other countries.

Lightning is a trademark of Apple Inc.

The AirPlay logo is a trademark of Apple Inc.

Apple Lossless Audio Codec

Copyright © 2011 Apple Inc. All rights reserved.

Licensed under the Apache License, Version 2.0. You may obtain a copy of the License at <http://www.apache.org/licenses/LICENSE-2.0>.

About Wi-Fi®



The Wi-Fi CERTIFIED Logo is a certification mark of the Wi-Fi Alliance.

Auto power off setting

Long press the **■** on the unit for 3 seconds to switch auto power off setting **ON/OFF**.

The operation can be conducted using only the **■** on the unit. No need to set this using the remote control.

Initial setting is set to **ON**.

Note

- When the auto power off is set to **ON**, "APD ON" will be displayed on the main display.
- When the auto power off is set to **OFF**, "APD OFF" will be displayed on the main display.

Setting quick start mode

Quick start mode significantly reduces the time required for startup. It also allows the unit to power on automatically using AirPlay and DLNA. Follow the steps below to turn on quick start mode. Power consumption increases when set to quick start mode when compared to regular standby mode.

Setting quick start mode

1 Press **⏻** STANDBY/ON.

After the power turns on, it takes approximately 30 seconds for the unit to be ready to use.

2 Hold the **INPUT** depressed for 3 seconds.

Quick start mode has been turned on. "QUICK START ON" is shown on the main display.

Canceling quick start mode

1 Hold the **INPUT** depressed for 3 seconds when the unit is in the quick start mode.

The quick start mode will be canceled. "QUICK START OFF" is shown on the main display.

Restoring all the settings to the defaults

Use the steps below to restore all the settings to their defaults. Conduct the operation without any disc inserted ("NO DISC").

1 Press **⏻** STANDBY/ON to turn the power on.

2 Press **CD** on the remote control or **INPUT** repeatedly on the main unit to select **CD input**.

3 Press **⏻** STANDBY/ON and **■** simultaneously.

Use the buttons on this unit's top panel. "DEFAULT" is displayed while the settings are being restored. Power is turned off.

Specifications

• Amplifier section

RMS Power Output: 20 W + 20 W
(1 kHz, 10 %, T.H.D., 8 Ω)

• Tuner section

Frequency Range (FM) 87.5 MHz to 108 MHz
Frequency Range (DAB) 174.928 MHz to 239.200 MHz
Antenna Input (DAB/FM) 75 Ω unbalanced

• Network

WLAN standards IEEE 802.11b, IEEE 802.11g
Frequency band 2.412 GHz to 2.472 GHz
(2.4 GHz ISM Band, 13 Channels)
Channel 1 to Channel 13
Modulation 802.11b mode (DS-SS: IEEE 802.11b)
802.11g mode (OFDM: IEEE 802.11g)

• Miscellaneous

iPod/iPhone dock 5 V, 1 A
USB terminal 5 V, 2.1 A
Power source AC 100 V to 240 V, 50 Hz/60 Hz
Power consumption
Power on 36 W
Power stand-by* 0.5 W or less
Power stand-by (Quick start mode)* 3 W or less
*When not being charged
Dimensions 520 mm (W) x 218 mm (H) x 137 mm (D)
Weight (without package) 3.9 kg

• Speaker

Type
Passive radiator
Fullrange 6.6 cm cone
Passive radiator 7.7 cm cone
Playback frequency range 60 Hz to 20 kHz

• Accessories

Remote control 1
Power cord 1
AC adapter 1
AAA batteries (R03) 2
DAB/FM wire antenna 1
iPad stand 1
Warranty card
Operating instructions (this document)

Note

- Specifications and the design are subject to possible modifications without notice, due to improvements.
- iOS is a trademark on which Cisco holds the trademark right in the US and certain other countries.

Declaration of Conformity with regard to the R&TTE Directive 1999/5/EC

Manufacturer:

PIONEER CORPORATION

1-1, Shin-ogura, Saiwai-ku,

Kawasaki-shi, Kanagawa

212-0031, Japan

EU Representative's:

Pioneer Europe NV

Haven 1087, Keetberglaan 1,

9120 Melsele, Belgium

<http://www.pioneer.eu>



English:

Hereby, Pioneer, declares that this X-SMC55DAB-S is in compliance with the essential requirements and other relevant provisions of Directive 1999/5/EC.

Suomi:

Pioneer vakuuttaa täten että X-SMC55DAB-S tyyppinen laite on direktiivin 1999/5/EY oleellisten vaatimusten ja sitä koskevien direktiivin muiden ehtojen mukainen.

Nederlands:

Hierbij verklaart Pioneer dat het toestel X-SMC55DAB-S in overeenstemming is met de essentiële eisen en de andere relevante bepalingen van richtlijn 1999/5/EG

Français:

Par la présente Pioneer déclare que l'appareil X-SMC55DAB-S est conforme aux exigences essentielles et aux autres dispositions pertinentes de la directive 1999/5/CE

Svenska:

Härmed intygar Pioneer att denna X-SMC55DAB-S står i överensstämmelse med de väsentliga egenskapskrav och övriga relevanta bestämmelser som framgår av direktiv 1999/5/EG.

Dansk:

Undertegnede Pioneer erklærer herved, at følgende udstyr X-SMC55DAB-S overholder de væsentlige krav og øvrige relevante krav i direktiv 1999/5/EF

Deutsch:

Hiermit erklärt Pioneer, dass sich dieses X-SMC55DAB-S in Übereinstimmung mit den grundlegenden Anforderungen und den anderen relevanten Vorschriften der Richtlinie 1999/5/EG befindet". (BMW i)

Ελληνικά:

ΜΕ ΤΗΝ ΠΑΡΟΥΣΑ Pioneer ΔΗΛΩΝΕΙ ΟΤΙ Χ-SMC55DAB-S ΣΥΜΜΟΡΦΩΝΕΤΑΙ ΠΡΟΣ ΤΙΣ ΟΥΣΙΩΔΕΙΣ ΑΠΑΙΤΗΣΕΙΣ ΚΑΙ ΤΙΣ ΛΟΙΠΕΣ ΣΧΕΤΙΚΕΣ ΔΙΑΤΑΞΕΙΣ ΤΗΣ ΟΔΗΓΙΑΣ 1999/5/ΕΚ

Italiano:

Con la presente Pioneer dichiara che questo X-SMC55DAB-S è conforme ai requisiti essenziali ed alle altre disposizioni pertinenti stabilite dalla direttiva 1999/5/CE.

Español:

Por medio de la presente Pioneer declara que el X-SMC55DAB-S cumple con los requisitos esenciales y cualesquiera otras disposiciones aplicables o exigibles de la Directiva 1999/5/CE

Português:

Pioneer declara que este X-SMC55DAB-S está conforme com os requisitos essenciais e outras disposições da Directiva 1999/5/CE.

Čeština:

Pioneer tímto prohlašuje, že tento X-SMC55DAB-S je ve shodě se základními požadavky a dalšími příslušnými ustanoveními směrnice 1999/5/ES

Eesti:

Käesolevaga kinnitab Pioneer seadme X-SMC55DAB-S vastavust direktiivi 1999/5/EÜ põhinõuetele ja nimetatud direktiivist tulenevatele teistele asjakohastele sätetele.

Magyar:

Alulírott, Pioneer nyilatkozom, hogy a X-SMC55DAB-S megfelel a vonatkozó alapvető követelményeknek és az 1999/5/EC irányelv egyéb előírásainak.

Latviešu valoda:

Ar šo Pioneer deklarē, ka X-SMC55DAB-S atbilst Direktīvas 1999/5/EK būtiskajām prasībām un citiem ar to saistītajiem noteikumiem.

Lietuvių kalba:

Šiuo Pioneer deklaruoja, kad šis X-SMC55DAB-S atitinka esminius reikalavimus ir kitas 1999/5/EB Direktyvos nuostatas.

Malti:

Hawnhekk, Pioneer jiddikjara li dan X-SMC55DAB-S jikkonforma mal-htigijiet essenzjali u ma provvedimenti oħrajn rilevanti li hemm fid-Dirrettiva 1999/5/EC

Slovenčina:

Pioneer týmto vyhlasuje, že X-SMC55DAB-S splňa základné požiadavky a všetky príslušné ustanovenia Smernice 1999/5/ES.

Slovenščina:

Pioneer izjavlja, da je ta X-SMC55DAB-S v skladu z bistvenimi zahtevami in ostalimi relevantnimi določili direktive 1999/5/ES.

Română:

Prin prezenta, Pioneer declara ca acest X-SMC55DAB-S este in conformitate cu cerintele esentiale si alte prevederi ale Directivei 1999/5/EU.

български:

С настоящето, Pioneer декларира, че този X-SMC55DAB-S отговаря на основните изисквания и други съответни постановления на Директива 1999/5/EC.

Polski:

Niniejszym Pioneer oświadcza, że X-SMC55DAB-S jest zgodny z zasadniczymi wymogami oraz pozostałymi stosownymi postanowieniami Dyrektywy 1999/5/EC

Norsk:

Pioneer erklærer herved at utstyret X-SMC55DAB-S er i samsvar med de grunnleggende krav og øvrige relevante krav i direktiv 1999/5/EF.

Íslenska:

Hér með lýsir Pioneer yfir því að X-SMC55DAB-S er í samræmi við grunnkröfur og aðrar kröfur, sem gerðar eru í tilskipun 1999/5/EC

Hrvatski:

Ovime tvrtka Pioneer izjavluje da je ovaj X-SMC55DAB-S u skladu osnovnim zahtjevima i ostalim odredbama Direktive 1999/5/EC.

<http://www.pioneer.co.uk>

<http://www.pioneer.eu>

© 2013 PIONEER CORPORATION.
All rights reserved.

PIONEER CORPORATION

1-1, Shin-ogura, Saiwai-ku, Kawasaki-shi, Kanagawa 212-0031, Japan

PIONEER ELECTRONICS (USA) INC.

P.O. BOX 1540, Long Beach, California 90801-1540, U.S.A. TEL: (800) 421-1404

PIONEER ELECTRONICS OF CANADA, INC.

340 Ferrier Street, Unit 2, Markham, Ontario L3R 2Z5, Canada TEL: 1-877-283-5901, 905-479-4411

PIONEER EUROPE NV

Haven 1087, Keetberglaan 1, B-9120 Melsele, Belgium TEL: 03/570.05.11

PIONEER ELECTRONICS ASIACENTRE PTE. LTD.

253 Alexandra Road, #04-01, Singapore 159936 TEL: 65-6472-7555

PIONEER ELECTRONICS AUSTRALIA PTY. LTD.

5 Arco Lane, Heatherton, Victoria, 3202, Australia, TEL: (03) 9586-6300

PIONEER ELECTRONICS DE MEXICO S.A. DE C.V.

Bld. Manuel Avila Camacho 138 10 piso Col.Lomas de Chapultepec, Mexico, D.F. 11000 TEL: 55-9178-4270

K002_B3_En